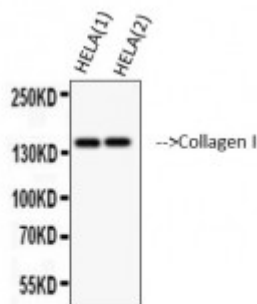


## Anti-Collagen I antibody



Western Blot (WB) analysis of HELA cells using Anti-Collagen I antibody from two batches. (STJ98915)



### Description

Collagen I is a protein encoded by the COL1A1 gene which is approximately 138,9 kDa. Collagen I is secreted into the extracellular space. It is involved in collagen chain trimerization, the integrin pathway, ERK signalling, focal adhesion and the phospholipase-C pathway. It is a pro-alpha-1 chain of type I collagen whose triple helix comprises two alpha-1 chains and one alpha-2 chain. Collagen I is expressed in the bone, skin, eye, lung and nervous system. Mutations in the COL1A1 gene may result in Caffey disease and Ehlers-Danlos syndrome. STJ98915 was affinity-purified from rabbit antiserum by affinity-chromatography using epitope-specific immunogen. This antibody detects endogenous Collagen I protein.

<b>Model</b>	STJ98915
<b>Host</b>	Mouse
<b>Reactivity</b>	Human, Mouse, Rat
<b>Applications</b>	ELISA, WB
<b>Immunogen</b>	synthetic peptide derived from Collagen I.
<b>Gene ID</b>	<a href="#">1277</a>
<b>Gene Symbol</b>	<a href="#">COL1A1</a>
<b>Dilution range</b>	WB 1:500-2000ELISA 1:10000-20000
<b>Specificity</b>	The antibody detects endogenous Collagen I protein.
<b>Purification</b>	The antibody was affinity-purified from rabbit antiserum by affinity-chromatography using epitope-specific immunogen.
<b>Note</b>	For Research Use Only (RUO).

<b>Protein Name</b>	Collagen alpha-1 I chain Alpha-1 type I collagen
<b>Molecular Weight</b>	139kDa
<b>Clonality</b>	Monoclonal
<b>Conjugation</b>	Unconjugated
<b>Formulation</b>	Liquid in PBS containing 50% glycerol, 0.5% BSA and 0.02% sodium azide.
<b>Concentration</b>	1 mg/ml
<b>Storage Instruction</b>	Store at -20°C, and avoid repeat freeze-thaw cycles.
<b>Database Links</b>	<a href="#">HGNC:21970MIM:114000</a>
<b>Alternative Names</b>	Collagen alpha-1 I chain Alpha-1 type I collagen

---

**St John's Laboratory Ltd**

**F** +44 (0)207 681 2580

**T** +44 (0)208 223 3081

**W** <http://www.stjohnslabs.com/>

**E** [info@stjohnslabs.com](mailto:info@stjohnslabs.com)