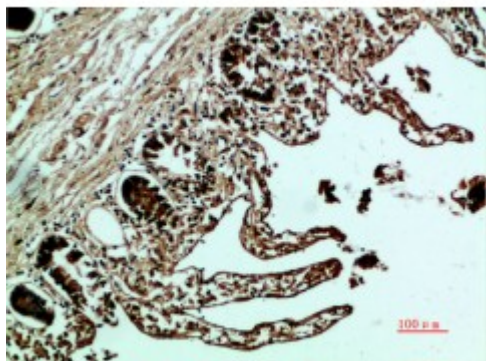


Anti-Fibronectin antibody



Description	Rabbit polyclonal to Fibronectin.
Model	STJ98955
Host	Rabbit
Reactivity	Human
Applications	ELISA, WB
Immunogen	Synthetic peptide from human Fibronectin protein.
Immunogen Region	2304-2375 aa
Gene ID	2335
Gene Symbol	FN1
Dilution range	WB 1:500-2000ELISA 1:10000-20000
Specificity	The antibody detects endogenous Fibronectin.
Tissue Specificity	Plasma FN (soluble dimeric form) is secreted by hepatocytes. Cellular FN (dimeric or cross-linked multimeric forms), made by fibroblasts, epithelial and other cell types, is deposited as fibrils in the extracellular matrix. Ugl-Y1, Ugl-Y2 and Ugl-Y3 are found in urine.
Purification	The antibody was affinity-purified from rabbit antiserum by affinity-chromatography using epitope-specific immunogen.
Note	For Research Use Only (RUO).
Protein Name	Fibronectin FN Cold-insoluble globulin CIG Anastellin Ugl-Y1 Ugl-Y2 Ugl-Y3

Clonality	Polyclonal
Conjugation	Unconjugated
Isotype	IgG
Formulation	Liquid in PBS containing 50% glycerol, 0.5% BSA and 0.02% sodium azide.
Concentration	1 mg/ml
Storage Instruction	Store at -20°C, and avoid repeat freeze-thaw cycles.
Database Links	HGNC:3778OMIM:135600
Alternative Names	Fibronectin FN Cold-insoluble globulin CIG Anastellin Ugl-Y1 Ugl-Y2 Ugl-Y3
Function	Fibronectins bind cell surfaces and various compounds including collagen, fibrin, heparin, DNA, and actin. Fibronectins are involved in cell adhesion, cell motility, opsonization, wound healing, and maintenance of cell shape. Involved in osteoblast compaction through the fibronectin fibrillogenesis cell-mediated matrix assembly process, essential for osteoblast mineralization. Participates in the regulation of type I collagen deposition by osteoblasts.; Anastellin binds fibronectin and induces fibril formation. This fibronectin polymer, named superfibronectin, exhibits enhanced adhesive properties. Both anastellin and superfibronectin inhibit tumor growth, angiogenesis and metastasis. Anastellin activates p38 MAPK and inhibits lysophospholipid signaling.
Cellular Localization	Secreted, extracellular space, extracellular matrix.
Post-translational Modifications	Sulfated. It is not known whether both or only one of Thr-2064 and Thr-2065 are/is glycosylated. Forms covalent cross-links mediated by a transglutaminase, such as F13A or TGM2, between a glutamine and the epsilon-amino group of a lysine residue, forming homopolymers and heteropolymers (e.g. fibrinogen-fibronectin, collagen-fibronectin heteropolymers).; Phosphorylated by FAM20C in the extracellular medium. Proteolytic processing produces the C-terminal NC1 peptide, anastellin.; Some lysine residues are oxidized to allysine by LOXL3, promoting fibronectin activation and matrix formation.