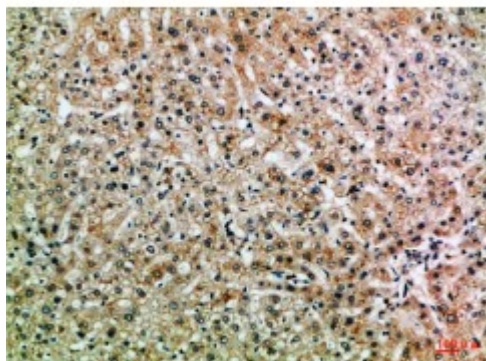


Anti-ASPP1 antibody



Description	Rabbit polyclonal to ASPP1.
Model	STJ98973
Host	Rabbit
Reactivity	Human
Applications	ELISA, WB
Immunogen	Synthetic peptide from human ASPP1 protein.
Immunogen Region	630-680 aa
Gene ID	23368
Gene Symbol	PPP1R13B
Dilution range	WB 1:500-2000ELISA 1:10000-20000
Specificity	The antibody detects endogenous ASPP1 .
Tissue Specificity	Reduced expression in breast carcinomas expressing a wild-type TP53 protein.
Purification	The antibody was affinity-purified from rabbit antiserum by affinity-chromatography using epitope-specific immunogen.
Note	For Research Use Only (RUO).
Protein Name	Apoptosis-stimulating of p53 protein 1 Protein phosphatase 1 regulatory subunit 13B
Clonality	Polyclonal
Conjugation	Unconjugated

Isotype	IgG
Formulation	Liquid in PBS containing 50% glycerol, 0.5% BSA and 0.02% sodium azide.
Concentration	1 mg/ml
Storage Instruction	Store at -20°C, and avoid repeat freeze-thaw cycles.
Database Links	HGNC:14950MIM:606455
Alternative Names	Apoptosis-stimulating of p53 protein 1 Protein phosphatase 1 regulatory subunit 13B
Function	Regulator that plays a central role in regulation of apoptosis via its interaction with p53/TP53. Regulates TP53 by enhancing the DNA binding and transactivation function of TP53 on the promoters of proapoptotic genes in vivo.
Sequence and Domain Family	The ankyrin repeats and the SH3 domain are required for specific interactions with TP53.
Cellular Localization	Cytoplasm Nucleus. Predominantly cytoplasmic. Some fraction is nuclear.

St John's Laboratory Ltd

F +44 (0)207 681 2580

T +44 (0)208 223 3081

W <http://www.stjohnslabs.com/>

E info@stjohnslabs.com