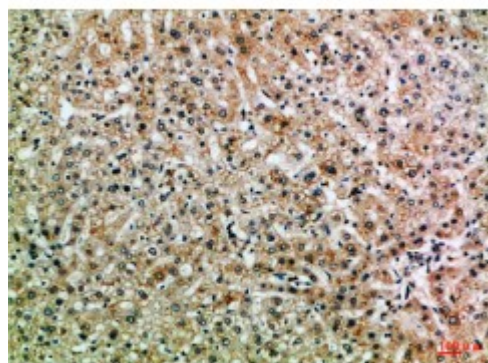


## Anti-ASPP1 antibody



<b>Description</b>	Rabbit polyclonal to ASPP1.
<b>Model</b>	STJ98973
<b>Host</b>	Rabbit
<b>Reactivity</b>	Human
<b>Applications</b>	ELISA, WB
<b>Immunogen</b>	Synthetic peptide from human ASPP1 protein.
<b>Immunogen Region</b>	630-680 aa
<b>Gene ID</b>	<a href="#">23368</a>
<b>Gene Symbol</b>	<a href="#">PPP1R13B</a>
<b>Dilution range</b>	WB 1:500-2000ELISA 1:10000-20000
<b>Specificity</b>	The antibody detects endogenous ASPP1 .
<b>Tissue Specificity</b>	Reduced expression in breast carcinomas expressing a wild-type TP53 protein.
<b>Purification</b>	The antibody was affinity-purified from rabbit antiserum by affinity-chromatography using epitope-specific immunogen.
<b>Note</b>	For Research Use Only (RUO).
<b>Protein Name</b>	Apoptosis-stimulating of p53 protein 1 Protein phosphatase 1 regulatory subunit 13B
<b>Clonality</b>	Polyclonal
<b>Conjugation</b>	Unconjugated

<b>Isotype</b>	IgG
<b>Formulation</b>	Liquid in PBS containing 50% glycerol, 0.5% BSA and 0.02% sodium azide.
<b>Concentration</b>	1 mg/ml
<b>Storage Instruction</b>	Store at -20°C, and avoid repeat freeze-thaw cycles.
<b>Database Links</b>	<a href="https://www.ncbi.nlm.nih.gov/ncbiurl/5680282/HGNC:149500MIM:606455">HGNC:149500MIM:606455</a>
<b>Alternative Names</b>	Apoptosis-stimulating of p53 protein 1 Protein phosphatase 1 regulatory subunit 13B
<b>Function</b>	Regulator that plays a central role in regulation of apoptosis via its interaction with p53/TP53. Regulates TP53 by enhancing the DNA binding and transactivation function of TP53 on the promoters of proapoptotic genes in vivo.
<b>Sequence and Domain Family</b>	The ankyrin repeats and the SH3 domain are required for specific interactions with TP53.
<b>Cellular Localization</b>	Cytoplasm Nucleus. Predominantly cytoplasmic. Some fraction is nuclear.

---

**St John's Laboratory Ltd**

**F** +44 (0)207 681 2580

**T** +44 (0)208 223 3081

**W** <http://www.stjohnslabs.com/>

**E** [info@stjohnslabs.com](mailto:info@stjohnslabs.com)