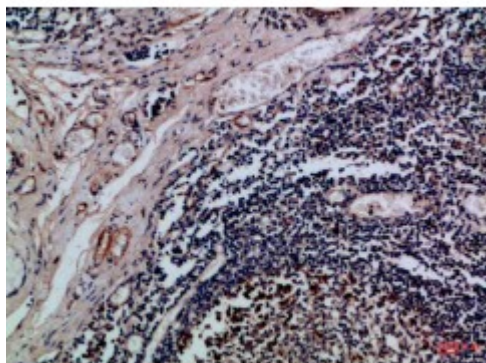


Anti-Integrin alpha antibody



Description	Rabbit polyclonal to Integrin alphaE.
Model	STJ98984
Host	Rabbit
Reactivity	Human
Applications	ELISA, WB
Immunogen	Synthetic peptide from human Integrin alphaE protein.
Immunogen Region	710-770 aa
Gene ID	3682
Gene Symbol	ITGAE
Dilution range	WB 1:500-2000ELISA 1:10000-20000
Specificity	The antibody detects endogenous Integrin alphaE .
Tissue Specificity	Expressed on a subclass of T-lymphocytes known as intra-epithelial lymphocytes which are located between mucosal epithelial cells.
Purification	The antibody was affinity-purified from rabbit antiserum by affinity-chromatography using epitope-specific immunogen.
Note	For Research Use Only (RUO).
Protein Name	Integrin alpha-E HML-1 antigen Integrin alpha-IEL Mucosal lymphocyte 1 antigen CD antigen CD103 Integrin alpha-E light chain Integrin alpha-E heavy chain
Clonality	Polyclonal

Conjugation	Unconjugated
Isotype	IgG
Formulation	Liquid in PBS containing 50% glycerol, 0.5% BSA and 0.02% sodium azide.
Concentration	1 mg/ml
Storage Instruction	Store at -20°C, and avoid repeat freeze-thaw cycles.
Database Links	HGNC:6147OMIM:604682
Alternative Names	Integrin alpha-E HML-1 antigen Integrin alpha-IEL Mucosal lymphocyte 1 antigen CD antigen CD103 Integrin alpha-E light chain Integrin alpha-E heavy chain
Function	Integrin alpha-E/beta-7 is a receptor for E-cadherin. It mediates adhesion of intra-epithelial T-lymphocytes to epithelial cell monolayers.
Sequence and Domain Family	The integrin I-domain (insert) is a VWFA domain. Integrins with I-domains do not undergo protease cleavage.
Cellular Localization	Membrane. Single-pass type I membrane protein.

St John's Laboratory Ltd

F +44 (0)207 681 2580

T +44 (0)208 223 3081

W <http://www.stjohnslabs.com/>

E info@stjohnslabs.com