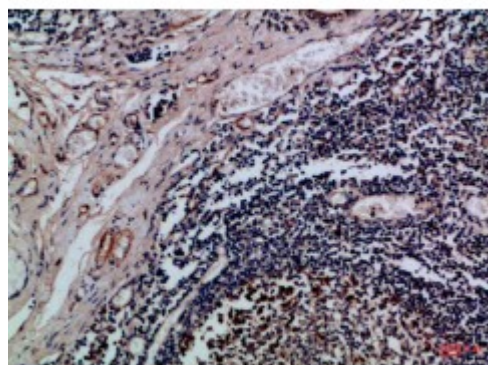


## Anti-Integrin alpha antibody



<b>Description</b>	Rabbit polyclonal to Integrin alphaE.
<b>Model</b>	STJ98984
<b>Host</b>	Rabbit
<b>Reactivity</b>	Human
<b>Applications</b>	ELISA, WB
<b>Immunogen</b>	Synthetic peptide from human Integrin alphaE protein.
<b>Immunogen Region</b>	710-770 aa
<b>Gene ID</b>	<a href="#">3682</a>
<b>Gene Symbol</b>	<a href="#">ITGAE</a>
<b>Dilution range</b>	WB 1:500-2000ELISA 1:10000-20000
<b>Specificity</b>	The antibody detects endogenous Integrin alphaE .
<b>Tissue Specificity</b>	Expressed on a subclass of T-lymphocytes known as intra-epithelial lymphocytes which are located between mucosal epithelial cells.
<b>Purification</b>	The antibody was affinity-purified from rabbit antiserum by affinity-chromatography using epitope-specific immunogen.
<b>Note</b>	For Research Use Only (RUO).
<b>Protein Name</b>	Integrin alpha-E HML-1 antigen Integrin alpha-IEL Mucosal lymphocyte 1 antigen CD antigen CD103 Integrin alpha-E light chain Integrin alpha-E heavy chain
<b>Clonality</b>	Polyclonal

<b>Conjugation</b>	Unconjugated
<b>Isotype</b>	IgG
<b>Formulation</b>	Liquid in PBS containing 50% glycerol, 0.5% BSA and 0.02% sodium azide.
<b>Concentration</b>	1 mg/ml
<b>Storage Instruction</b>	Store at -20°C, and avoid repeat freeze-thaw cycles.
<b>Database Links</b>	<a href="#">HGNC:6147OMIM:604682</a>
<b>Alternative Names</b>	Integrin alpha-E HML-1 antigen Integrin alpha-IEL Mucosal lymphocyte 1 antigen CD antigen CD103 Integrin alpha-E light chain Integrin alpha-E heavy chain
<b>Function</b>	Integrin alpha-E/beta-7 is a receptor for E-cadherin. It mediates adhesion of intra-epithelial T-lymphocytes to epithelial cell monolayers.
<b>Sequence and Domain Family</b>	The integrin I-domain (insert) is a VWFA domain. Integrins with I-domains do not undergo protease cleavage.
<b>Cellular Localization</b>	Membrane. Single-pass type I membrane protein.

---

**St John's Laboratory Ltd**

**F** +44 (0)207 681 2580

**T** +44 (0)208 223 3081

**W** <http://www.stjohnslabs.com/>

**E** [info@stjohnslabs.com](mailto:info@stjohnslabs.com)