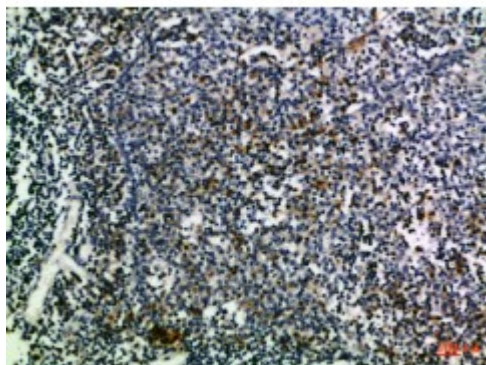


Anti-CD274 antibody



Description	Rabbit polyclonal to CD274.
Model	STJ98996
Host	Rabbit
Reactivity	Human
Applications	ELISA, WB
Immunogen	Synthetic peptide from human CD274 protein.
Immunogen Region	181-230 aa
Gene ID	29126
Gene Symbol	CD274
Dilution range	WB 1:500-2000ELISA 1:10000-20000
Specificity	The antibody detects endogenous CD274 .
Tissue Specificity	Highly expressed in the heart, skeletal muscle, placenta and lung. Weakly expressed in the thymus, spleen, kidney and liver. Expressed on activated T- and B-cells, dendritic cells, keratinocytes and monocytes.
Purification	The antibody was affinity-purified from rabbit antiserum by affinity-chromatography using epitope-specific immunogen.
Note	For Research Use Only (RUO).
Protein Name	Programmed cell death 1 ligand 1 PD-L1 PDCD1 ligand 1 Programmed death ligand 1 B7 homolog 1 B7-H1 CD antigen CD274
Clonality	Polyclonal

Conjugation	Unconjugated
Isotype	IgG
Formulation	Liquid in PBS containing 50% glycerol, 0.5% BSA and 0.02% sodium azide.
Concentration	1 mg/ml
Storage Instruction	Store at -20°C, and avoid repeat freeze-thaw cycles.
Database Links	HGNC:17635OMIM:605402
Alternative Names	Programmed cell death 1 ligand 1 PD-L1 PDCD1 ligand 1 Programmed death ligand 1 B7 homolog 1 B7-H1 CD antigen CD274
Function	Involved in the costimulatory signal, essential for T-cell proliferation and production of IL10 and IFNG, in an IL2-dependent and a PDCD1-independent manner. Interaction with PDCD1 inhibits T-cell proliferation and cytokine production.
Cellular Localization	Isoform 1: Cell membrane Isoform 2: Endomembrane system

St John's Laboratory Ltd

F +44 (0)207 681 2580

T +44 (0)208 223 3081

W <http://www.stjohnslabs.com/>

E info@stjohnslabs.com