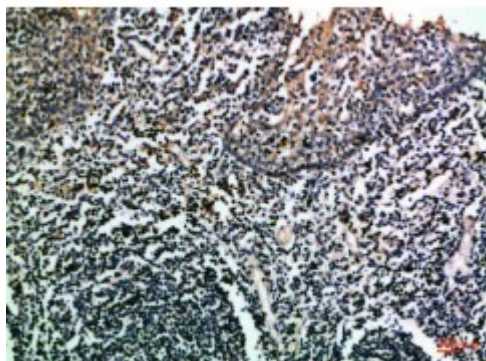


Anti-CD275 antibody



Description	Rabbit polyclonal to CD275.
Model	STJ99001
Host	Rabbit
Reactivity	Human
Applications	ELISA, WB
Immunogen	Synthetic peptide from human CD275 protein.
Immunogen Region	201-250 aa
Gene ID	102723996
Gene Symbol	ICOSLG
Dilution range	WB 1:500-2000ELISA 1:10000-20000
Specificity	The antibody detects endogenous CD275 .
Tissue Specificity	Isoform 1 is widely expressed (brain, heart, kidney, liver, lung, pancreas, placenta, skeletal muscle, bone marrow, colon, ovary, prostate, testis, lymph nodes, leukocytes, spleen, thymus and tonsil), while isoform 2 is detected only in lymph nodes, leukocytes and spleen. Expressed on activated monocytes and dendritic cells.
Purification	The antibody was affinity-purified from rabbit antiserum by affinity-chromatography using epitope-specific immunogen.
Note	For Research Use Only (RUO).
Protein Name	ICOS ligand B7 homolog 2 B7-H2 B7-like protein G150 B7-related protein 1 B7RP-1 CD antigen CD275

Clonality	Polyclonal
Conjugation	Unconjugated
Isotype	IgG
Formulation	Liquid in PBS containing 50% glycerol, 0.5% BSA and 0.02% sodium azide.
Concentration	1 mg/ml
Storage Instruction	Store at -20°C, and avoid repeat freeze-thaw cycles.
Database Links	HGNC:17087OMIM:605717
Alternative Names	ICOS ligand B7 homolog 2 B7-H2 B7-like protein G150 B7-related protein 1 B7RP-1 CD antigen CD275
Function	Ligand for the T-cell-specific cell surface receptor ICOS. Acts as a costimulatory signal for T-cell proliferation and cytokine secretion; induces also B-cell proliferation and differentiation into plasma cells. Could play an important role in mediating local tissue responses to inflammatory conditions, as well as in modulating the secondary immune response by co-stimulating memory T-cell function .
Cellular Localization	Membrane

St John's Laboratory Ltd

F +44 (0)207 681 2580

T +44 (0)208 223 3081

W <http://www.stjohnslabs.com/>

E info@stjohnslabs.com