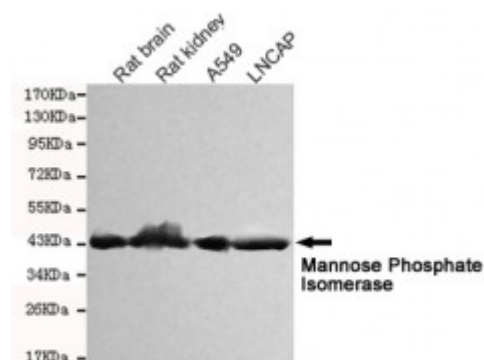


Anti-Mannose Phosphate Isomerase antibody



Description	Mouse monoclonal to Mannose Phosphate Isomerase.
Model	STJ99059
Host	Mouse
Reactivity	Human, Rat
Applications	ELISA, WB
Immunogen	Purified recombinant human Mannose Phosphate Isomerase protein fragments expressed in E.coli.
Gene ID	4351
Gene Symbol	MPI
Dilution range	WB 1:500-2000ELISA 1:10000-20000
Specificity	This antibody detects endogenous levels of Mannose Phosphate Isomerase and does not cross-react with related proteins.
Tissue Specificity	Expressed in all tissues, but more abundant in heart, brain and skeletal muscle.
Purification	The antibody was affinity-purified from rabbit antiserum by affinity-chromatography using epitope-specific immunogen.
Clone ID	4G9-B4-B8
Note	For Research Use Only (RUO).
Protein Name	Mannose-6-phosphate isomerase Phosphohexomutase Phosphomannose isomerase PMI
Molecular Weight	54kDa

Clonality	Monoclonal
Conjugation	Unconjugated
Isotype	IgG1
Formulation	Liquid in PBS containing 50% glycerol, 0.5% BSA and 0.02% sodium azide.
Concentration	1 mg/ml
Storage Instruction	Store at -20°C, and avoid repeat freeze-thaw cycles.
Database Links	HGNC:7216OMIM:154550
Alternative Names	Mannose-6-phosphate isomerase Phosphohexomutase Phosphomannose isomerase PMI
Function	Involved in the synthesis of the GDP-mannose and dolichol-phosphate-mannose required for a number of critical mannosyl transfer reactions.
Cellular Localization	Cytoplasm

St John's Laboratory Ltd

F +44 (0)207 681 2580

T +44 (0)208 223 3081

W <http://www.stjohnslabs.com/>

E info@stjohnslabs.com