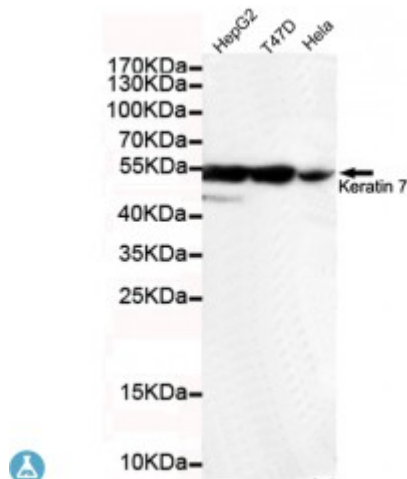


Anti-Keratin 7 antibody



Description	Mouse monoclonal to Keratin 7.
Model	STJ99060
Host	Mouse
Reactivity	Human
Applications	ELISA, WB
Immunogen	Purified recombinant human Keratin 7 protein fragments expressed in E.coli.
Immunogen Region	C-term
Gene ID	3855
Gene Symbol	KRT7
Dilution range	WB 1:500-2000ELISA 1:10000-20000
Specificity	This antibody detects endogenous levels of Keratin 7 and does not cross-react with related proteins.
Tissue Specificity	Expressed in cultured epidermal, bronchial and mesothelial cells but absent in colon, ectocervix and liver. Observed throughout the glandular cells in the junction between stomach and esophagus but is absent in the esophagus.
Purification	The antibody was affinity-purified from rabbit antiserum by affinity-chromatography using epitope-specific immunogen.
Clone ID	4G9-D8-H6
Note	For Research Use Only (RUO).
Protein Name	Keratin, type II cytoskeletal 7 Cytokeratin-7 CK-7 Keratin-7 K7 Sarcolectin

	Type-II keratin Kb7
Molecular Weight	55kDa
Clonality	Monoclonal
Conjugation	Unconjugated
Isotype	IgG2b
Formulation	Liquid in PBS containing 50% glycerol, 0.5% BSA and 0.02% sodium azide.
Concentration	1 mg/ml
Storage Instruction	Store at -20°C, and avoid repeat freeze-thaw cycles.
Database Links	HGNC:64450MIM:148059
Alternative Names	Keratin, type II cytoskeletal 7 Cytokeratin-7 CK-7 Keratin-7 K7 Sarcolectin Type-II keratin Kb7
Function	Blocks interferon-dependent interphase and stimulates DNA synthesis in cells. Involved in the translational regulation of the human papillomavirus type 16 E7 mRNA (HPV16 E7).
Cellular Localization	Cytoplasm
Post-translational Modifications	Arg-20 is dimethylated, probably to asymmetric dimethylarginine.

St John's Laboratory Ltd

F +44 (0)207 681 2580

T +44 (0)208 223 3081

W <http://www.stjohnslabs.com/>

E info@stjohnslabs.com