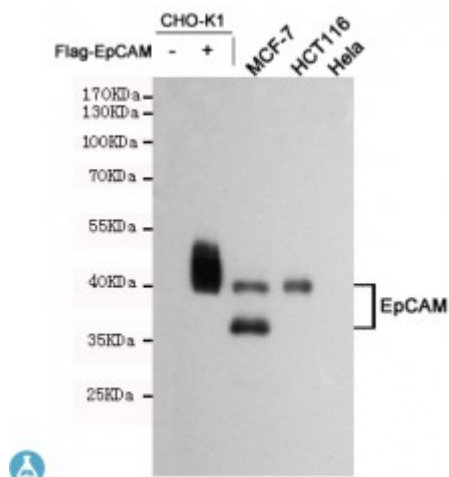


## Anti-EpCAM antibody



<b>Description</b>	Mouse monoclonal to EpCAM.
<b>Model</b>	STJ99064
<b>Host</b>	Mouse
<b>Reactivity</b>	Human
<b>Applications</b>	ELISA, WB
<b>Immunogen</b>	Purified recombinant EpCAM protein fragments expressed in E.coli.
<b>Gene ID</b>	<a href="#">4072</a>
<b>Gene Symbol</b>	<a href="#">EPCAM</a>
<b>Dilution range</b>	WB 1:500-2000ELISA 1:10000-20000
<b>Specificity</b>	This antibody detects endogenous levels of EpCAM and does not cross-react with related proteins.
<b>Tissue Specificity</b>	Highly and selectively expressed by undifferentiated rather than differentiated embryonic stem cells (ESC). Levels rapidly diminish as soon as ESC's differentiate (at protein levels). Expressed in almost all epithelial cell membranes but not on mesodermal or neural cell membranes. Found on the surface of adenocarcinoma.
<b>Purification</b>	The antibody was affinity-purified from rabbit antiserum by affinity-chromatography using epitope-specific immunogen.
<b>Clone ID</b>	1D5-B6-B10
<b>Note</b>	For Research Use Only (RUO).
<b>Protein Name</b>	Epithelial cell adhesion molecule Ep-CAM Adenocarcinoma-associated

antigen Cell surface glycoprotein Trop-1 Epithelial cell surface antigen  
Epithelial glycoprotein EGP Epithelial glycoprotein 314 EGP314