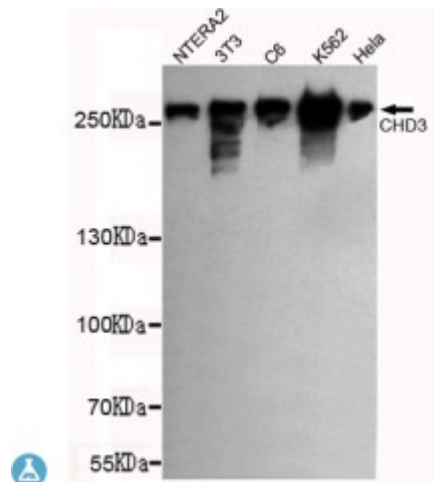


Anti-CHD3 antibody



Description	Mouse monoclonal to CHD3.
Model	STJ99071
Host	Mouse
Reactivity	Human, Mouse, Rat
Applications	ELISA, WB
Immunogen	Purified recombinant human CHD3 (C-term) protein fragments expressed in E.coli.
Immunogen Region	C-term
Gene ID	1107
Gene Symbol	CHD3
Dilution range	WB 1:500-2000ELISA 1:10000-20000
Specificity	This antibody detects endogenous levels of CHD3 (C-term) and does not cross-react with related proteins.
Tissue Specificity	Widely expressed.
Purification	The antibody was affinity-purified from rabbit antiserum by affinity-chromatography using epitope-specific immunogen.
Clone ID	7F6-G2-E5
Note	For Research Use Only (RUO).
Protein Name	Chromodomain-helicase-DNA-binding protein 3 CHD-3 ATP-dependent helicase CHD3 Mi-2 autoantigen 240 kDa protein Mi2-alpha Zinc finger

	helicase hZFH
Molecular Weight	260kDa
Clonality	Monoclonal
Conjugation	Unconjugated
Isotype	IgG1
Formulation	Liquid in PBS containing 50% glycerol, 0.5% BSA and 0.02% sodium azide.
Concentration	1 mg/ml
Storage Instruction	Store at -20°C, and avoid repeat freeze-thaw cycles.
Database Links	HGNC:1918OMIM:602120
Alternative Names	Chromodomain-helicase-DNA-binding protein 3 CHD-3 ATP-dependent helicase CHD3 Mi-2 autoantigen 240 kDa protein Mi2-alpha Zinc finger helicase hZFH
Function	Component of the histone deacetylase NuRD complex which participates in the remodeling of chromatin by deacetylating histones. Required for anchoring centrosomal pericentrin in both interphase and mitosis, for spindle organization and centrosome integrity.
Cellular Localization	Nucleus Cytoplasm, cytoskeleton, microtubule organizing center, centrosome. Associates with centrosomes in interphase and mitosis.

St John's Laboratory Ltd

F +44 (0)207 681 2580

T +44 (0)208 223 3081

W <http://www.stjohnslabs.com/>

E info@stjohnslabs.com