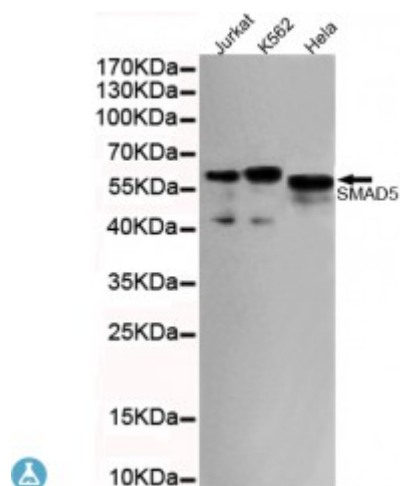


Anti-SMAD5 antibody



Description	Mouse monoclonal to SMAD5.
Model	STJ99081
Host	Mouse
Reactivity	Human
Applications	ELISA, WB
Immunogen	Purified recombinant human SMAD5 (C-term) protein fragments expressed in E.coli.
Immunogen Region	C-term
Gene ID	4090
Gene Symbol	SMAD5
Dilution range	WB 1:500-2000ELISA 1:10000-20000
Specificity	This antibody detects endogenous levels of SMAD5 (C-term) and does not cross-react with related proteins.
Tissue Specificity	Ubiquitous.
Purification	The antibody was affinity-purified from rabbit antiserum by affinity-chromatography using epitope-specific immunogen.
Clone ID	4B10-B10-B6
Note	For Research Use Only (RUO).
Protein Name	Mothers against decapentaplegic homolog 5 MAD homolog 5 Mothers against DPP homolog 5 JV5-1 SMAD family member 5 SMAD 5 Smad5 hSmad5

Molecular Weight	60kDa
Clonality	Monoclonal
Conjugation	Unconjugated
Isotype	IgG1
Formulation	Liquid in PBS containing 50% glycerol, 0.5% BSA and 0.02% sodium azide.
Concentration	1 mg/ml
Storage Instruction	Store at -20°C, and avoid repeat freeze-thaw cycles.
Database Links	HGNC:6771OMIM:603110
Alternative Names	Mothers against decapentaplegic homolog 5 MAD homolog 5 Mothers against DPP homolog 5 JV5-1 SMAD family member 5 SMAD 5 Smad5 hSmad5
Function	Transcriptional modulator activated by BMP (bone morphogenetic proteins) type 1 receptor kinase. SMAD5 is a receptor-regulated SMAD (R-SMAD).
Cellular Localization	Cytoplasm. Nucleus. Cytoplasmic in the absence of ligand. Migrates to the nucleus when complexed with SMAD4.
Post-translational Modifications	Phosphorylated on serine by BMP (bone morphogenetic proteins) type 1 receptor kinase.; Ubiquitin-mediated proteolysis by SMAD-specific E3 ubiquitin ligase SMURF1.

St John's Laboratory Ltd

F +44 (0)207 681 2580
T +44 (0)208 223 3081

W <http://www.stjohnslabs.com/>
E info@stjohnslabs.com