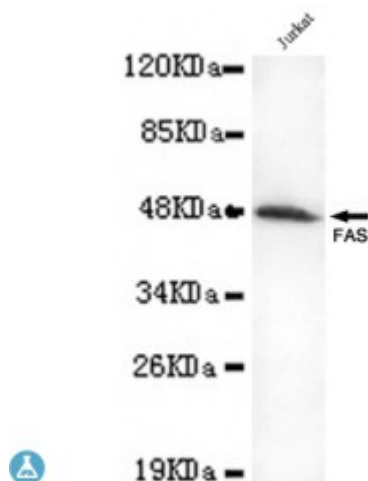


Anti-FAS antibody



Description	Mouse monoclonal to FAS.
Model	STJ99086
Host	Mouse
Reactivity	Human
Applications	ELISA, WB
Immunogen	Purified recombinant human FAS (C-term) protein fragments expressed in E.coli.
Immunogen Region	C-term
Gene ID	355
Gene Symbol	FAS
Dilution range	WB 1:500-2000ELISA 1:10000-20000
Specificity	This antibody detects endogenous levels of FAS (C-term) and does not cross-react with related proteins.
Tissue Specificity	Isoform 1 and isoform 6 are expressed at equal levels in resting peripheral blood mononuclear cells. After activation there is an increase in isoform 1 and decrease in the levels of isoform 6.
Purification	The antibody was affinity-purified from rabbit antiserum by affinity-chromatography using epitope-specific immunogen.
Clone ID	4C3-G7-B7-H5
Note	For Research Use Only (RUO).

