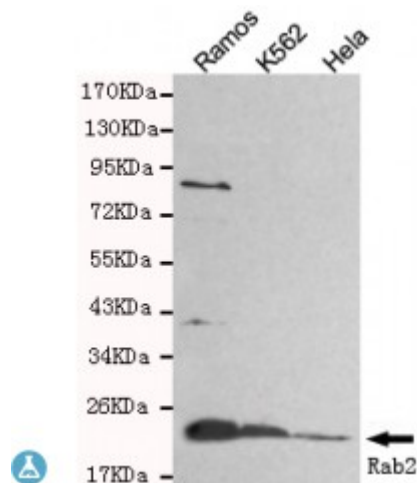


Anti-Rab2 antibody



Description	Mouse monoclonal to Rab2.
Model	STJ99102
Host	Mouse
Reactivity	Human
Applications	ELISA, WB
Immunogen	Purified recombinant human Rab2 protein fragments expressed in E.coli.
Gene ID	5862
Gene Symbol	RAB2A
Dilution range	WB 1:500-2000ELISA 1:10000-20000
Specificity	This antibody detects endogenous levels of Rab2 and does not cross-react with related proteins.
Purification	The antibody was affinity-purified from rabbit antiserum by affinity-chromatography using epitope-specific immunogen.
Clone ID	2B12-1D8-A5-A9
Note	For Research Use Only (RUO).
Protein Name	Ras-related protein Rab-2A
Molecular Weight	24kDa
Clonality	Monoclonal
Conjugation	Unconjugated

Isotype	IgG1
Formulation	Liquid in PBS containing 50% glycerol, 0.5% BSA and 0.02% sodium azide.
Concentration	1 mg/ml
Storage Instruction	Store at -20°C, and avoid repeat freeze-thaw cycles.
Database Links	HGNC:9763OMIM:179509
Alternative Names	Ras-related protein Rab-2A
Function	Required for protein transport from the endoplasmic reticulum to the Golgi complex.
Cellular Localization	Endoplasmic reticulum-Golgi intermediate compartment membrane Melanosome Endoplasmic reticulum membrane Golgi apparatus membrane. Identified by mass spectrometry in melanosome fractions from stage I to stage IV.

St John's Laboratory Ltd

F +44 (0)207 681 2580

T +44 (0)208 223 3081

W <http://www.stjohnslabs.com/>

E info@stjohnslabs.com