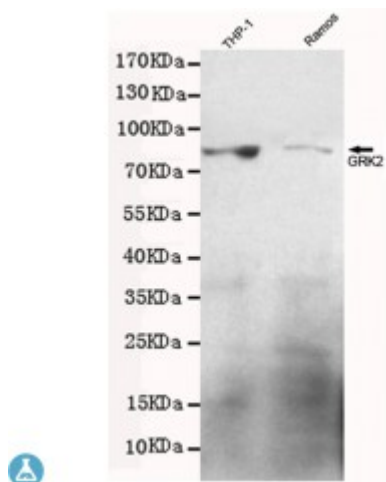


Anti-GRK2 antibody



Description	Mouse monoclonal to GRK2.
Model	STJ99115
Host	Mouse
Reactivity	Human
Applications	ELISA, WB
Immunogen	Purified recombinant human GRK2 protein fragments expressed in E.coli.
Gene ID	156
Gene Symbol	GRK2
Dilution range	WB 1:500-2000ELISA 1:10000-20000
Specificity	This antibody detects endogenous levels of GRK2 and does not cross-react with related proteins.
Tissue Specificity	Expressed in peripheral blood leukocytes.
Purification	The antibody was affinity-purified from rabbit antiserum by affinity-chromatography using epitope-specific immunogen.
Clone ID	3F8-G6-C11
Note	For Research Use Only (RUO).
Protein Name	Beta-adrenergic receptor kinase 1 Beta-ARK-1 G-protein coupled receptor kinase 2
Molecular Weight	80kDa
Clonality	Monoclonal

Conjugation	Unconjugated
Isotype	IgG1
Formulation	Liquid in PBS containing 50% glycerol, 0.5% BSA and 0.02% sodium azide.
Concentration	1 mg/ml
Storage Instruction	Store at -20°C, and avoid repeat freeze-thaw cycles.
Database Links	HGNC:289OMIM:109635
Alternative Names	Beta-adrenergic receptor kinase 1 Beta-ARK-1 G-protein coupled receptor kinase 2
Function	Specifically phosphorylates the agonist-occupied form of the beta-adrenergic and closely related receptors, probably inducing a desensitization of them. Key regulator of LPAR1 signaling. Competes with RALA for binding to LPAR1 thus affecting the signaling properties of the receptor. Desensitizes LPAR1 and LPAR2 in a phosphorylation-independent manner.
Sequence and Domain Family	The PH domain binds anionic phospholipids and helps recruiting ADRBK1 from the cytoplasm to plasma membrane close to activated receptors. It mediates binding to G protein beta and gamma subunits, competing with G-alpha subunits and other G-betagamma effectors.
Cellular Localization	Cytoplasm Cell membrane

St John's Laboratory Ltd

F +44 (0)207 681 2580
T +44 (0)208 223 3081

W <http://www.stjohnslabs.com/>
E info@stjohnslabs.com