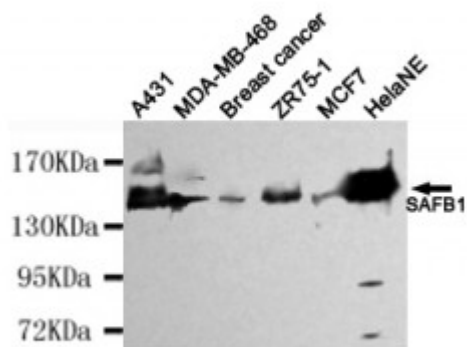


Anti-SAFB1 antibody



Description	Mouse monoclonal to SAFB1.
Model	STJ99122
Host	Mouse
Reactivity	Human
Applications	ELISA, WB
Immunogen	Purified recombinant human SAFB1 protein fragments expressed in E.coli.
Gene ID	6294
Gene Symbol	SAFB
Dilution range	WB 1:500-2000ELISA 1:10000-20000
Specificity	This antibody detects endogenous levels of SAFB1 and does not cross-react with related prote.
Tissue Specificity	Ubiquitous. Expressed at high levels in the CNS and at low levels in the liver. Expressed in a wide number of breast cancer cell lines.
Purification	The antibody was affinity-purified from rabbit antiserum by affinity-chromatography using epitope-specific immunogen.
Clone ID	2E8-E2-G6
Note	For Research Use Only (RUO).
Protein Name	Scaffold attachment factor B1 SAF-B SAF-B1 HSP27 estrogen response element-TATA box-binding protein HSP27 ERE-TATA-binding protein
Molecular Weight	130kDa

Clonality	Monoclonal
Conjugation	Unconjugated
Isotype	IgG1
Formulation	Liquid in PBS containing 50% glycerol, 0.5% BSA and 0.02% sodium azide.
Concentration	1 mg/ml
Storage Instruction	Store at -20°C, and avoid repeat freeze-thaw cycles.
Database Links	HGNC:105200MIM:602895
Alternative Names	Scaffold attachment factor B1 SAF-B SAF-B1 HSP27 estrogen response element-TATA box-binding protein HSP27 ERE-TATA-binding protein
Function	Binds to scaffold/matrix attachment region (S/MAR) DNA and forms a molecular assembly point to allow the formation of a 'transcriptosomal' complex (consisting of SR proteins and RNA polymerase II) coupling transcription and RNA processing . Can function as an estrogen receptor corepressor and can also bind to the HSP27 promoter and decrease its transcription. When associated with RBMX, binds to and stimulates transcription from the SREBF1 promoter . Can inhibit cell proliferation.
Cellular Localization	Nucleus
Post-translational Modifications	Sumoylated by PIAS1 with SUMO1 and SUMO2/3, desumoylated by SENP1. Sumoylation is required for transcriptional repressor activity.

St John's Laboratory Ltd

F +44 (0)207 681 2580

T +44 (0)208 223 3081

W <http://www.stjohnslabs.com/>

E info@stjohnslabs.com