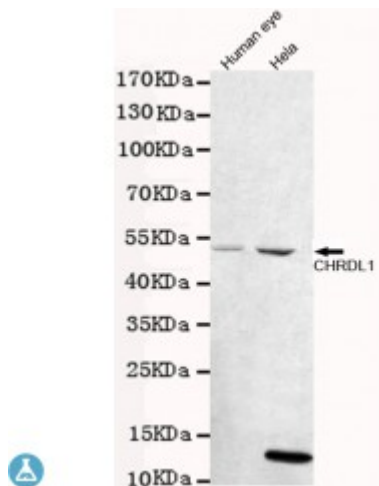


Anti-CHRD1 antibody



Description	Mouse monoclonal to CHRD1.
Model	STJ99125
Host	Mouse
Reactivity	Human
Applications	ELISA, WB
Immunogen	Purified recombinant human CHRD1 protein fragments expressed in E.coli.
Gene ID	91851
Gene Symbol	CHRD1
Dilution range	WB 1:500-2000ELISA 1:10000-20000
Specificity	This antibody detects endogenous levels of CHRD1 and does not cross-react with related proteins.
Tissue Specificity	Expressed in the developing cornea and in the eye anterior segment in addition to the retina. Differentially expressed in the fetal brain. There is high expression in cerebellum and neocortex. Expressed in retinal pericytes.
Purification	The antibody was affinity-purified from rabbit antiserum by affinity-chromatography using epitope-specific immunogen.
Clone ID	3H1-F6-A10
Note	For Research Use Only (RUO).
Protein Name	Chordin-like protein 1 Neuralin-1 Neurogenesin-1 Ventroptin
Molecular Weight	52kDa

Clonality	Monoclonal
Conjugation	Unconjugated
Isotype	IgG1
Formulation	Liquid in PBS containing 50% glycerol, 0.5% BSA and 0.02% sodium azide.
Concentration	1 mg/ml
Storage Instruction	Store at -20°C, and avoid repeat freeze-thaw cycles.
Database Links	HGNC:29861OMIM:300350
Alternative Names	Chordin-like protein 1 Neuralin-1 Neurogenesin-1 Ventroptin
Function	Antagonizes the function of BMP4 by binding to it and preventing its interaction with receptors. Alters the fate commitment of neural stem cells from gliogenesis to neurogenesis. Contributes to neuronal differentiation of neural stem cells in the brain by preventing the adoption of a glial fate. May play a crucial role in dorsoventral axis formation. May play a role in embryonic bone formation . May also play an important role in regulating retinal angiogenesis through modulation of BMP4 actions in endothelial cells. Plays a role during anterior segment eye development.
Cellular Localization	Secreted

St John's Laboratory Ltd

F +44 (0)207 681 2580

T +44 (0)208 223 3081

W <http://www.stjohnslabs.com/>

E info@stjohnslabs.com