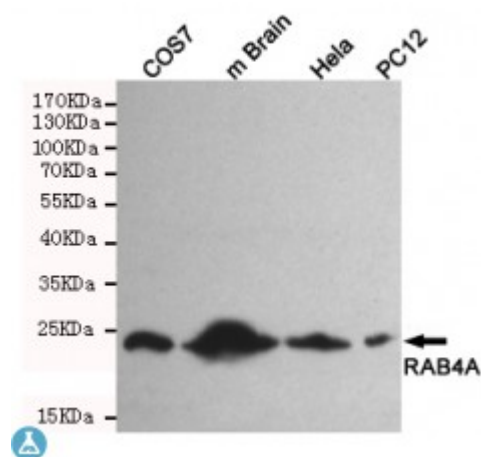


## Anti-RAB4A antibody



<b>Description</b>	Mouse monoclonal to RAB4A.
<b>Model</b>	STJ99152
<b>Host</b>	Mouse
<b>Reactivity</b>	Human, Mouse, Rat, Simian
<b>Applications</b>	ELISA, WB
<b>Immunogen</b>	Purified recombinant human RAB4A protein fragments expressed in E.coli.
<b>Gene ID</b>	<a href="#">5867</a>
<b>Gene Symbol</b>	<a href="#">RAB4A</a>
<b>Dilution range</b>	WB 1:500-2000ELISA 1:10000-20000
<b>Specificity</b>	This antibody detects endogenous levels of RAB4A and does not cross-react with related proteins.
<b>Purification</b>	The antibody was affinity-purified from rabbit antiserum by affinity-chromatography using epitope-specific immunogen.
<b>Clone ID</b>	3D1-A9-H10
<b>Note</b>	For Research Use Only (RUO).
<b>Protein Name</b>	Ras-related protein Rab-4A
<b>Molecular Weight</b>	24kDa
<b>Clonality</b>	Monoclonal
<b>Conjugation</b>	Unconjugated

<b>Isotype</b>	IgG2a
<b>Formulation</b>	Liquid in PBS containing 50% glycerol, 0.5% BSA and 0.02% sodium azide.
<b>Concentration</b>	1 mg/ml
<b>Storage Instruction</b>	Store at -20°C, and avoid repeat freeze-thaw cycles.
<b>Database Links</b>	<a href="#">HGNC:9781OMIM:179511</a>
<b>Alternative Names</b>	Ras-related protein Rab-4A
<b>Function</b>	Protein transport. Probably involved in vesicular traffic .
<b>Cellular Localization</b>	Membrane. Peripheral membrane protein. Cytoplasm. Generally associated with membranes. Cytoplasmic when phosphorylated by CDK1.
<b>Post-translational Modifications</b>	Phosphorylated by CDK1 kinase during mitosis.

---

**St John's Laboratory Ltd**

**F** +44 (0)207 681 2580

**T** +44 (0)208 223 3081

**W** <http://www.stjohnslabs.com/>

**E** [info@stjohnslabs.com](mailto:info@stjohnslabs.com)