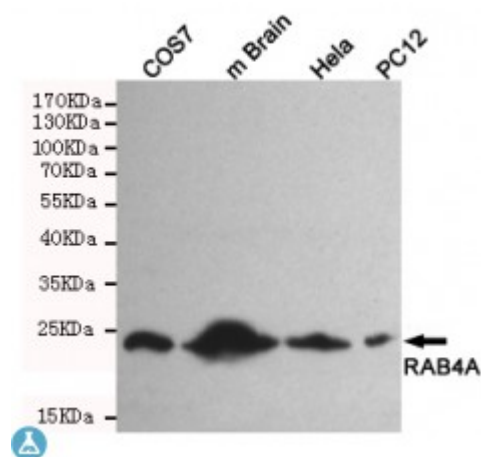


Anti-RAB4A antibody



Description	Mouse monoclonal to RAB4A.
Model	STJ99152
Host	Mouse
Reactivity	Human, Mouse, Rat, Simian
Applications	ELISA, WB
Immunogen	Purified recombinant human RAB4A protein fragments expressed in E.coli.
Gene ID	5867
Gene Symbol	RAB4A
Dilution range	WB 1:500-2000ELISA 1:10000-20000
Specificity	This antibody detects endogenous levels of RAB4A and does not cross-react with related proteins.
Purification	The antibody was affinity-purified from rabbit antiserum by affinity-chromatography using epitope-specific immunogen.
Clone ID	3D1-A9-H10
Note	For Research Use Only (RUO).
Protein Name	Ras-related protein Rab-4A
Molecular Weight	24kDa
Clonality	Monoclonal
Conjugation	Unconjugated

Isotype	IgG2a
Formulation	Liquid in PBS containing 50% glycerol, 0.5% BSA and 0.02% sodium azide.
Concentration	1 mg/ml
Storage Instruction	Store at -20°C, and avoid repeat freeze-thaw cycles.
Database Links	HGNC:9781OMIM:179511
Alternative Names	Ras-related protein Rab-4A
Function	Protein transport. Probably involved in vesicular traffic .
Cellular Localization	Membrane. Peripheral membrane protein. Cytoplasm. Generally associated with membranes. Cytoplasmic when phosphorylated by CDK1.
Post-translational Modifications	Phosphorylated by CDK1 kinase during mitosis.

St John's Laboratory Ltd

F +44 (0)207 681 2580

T +44 (0)208 223 3081

W <http://www.stjohnslabs.com/>

E info@stjohnslabs.com