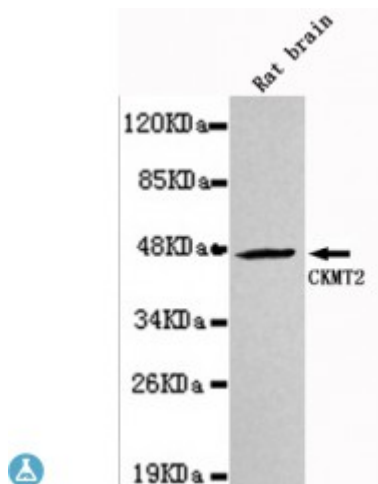


Anti-CKMT2 antibody



Description	Mouse monoclonal to CKMT2.
Model	STJ99155
Host	Mouse
Reactivity	Rat
Applications	ELISA, WB
Immunogen	Purified recombinant human CKMT2 protein fragments expressed in E.coli.
Gene ID	1160
Gene Symbol	CKMT2
Dilution range	WB 1:500-2000ELISA 1:10000-20000
Specificity	This antibody detects endogenous levels of CKMT2 and does not cross-react with related proteins.
Tissue Specificity	Sarcomere-specific. Found only in heart and skeletal muscles.
Purification	The antibody was affinity-purified from rabbit antiserum by affinity-chromatography using epitope-specific immunogen.
Clone ID	3F4-G5-H5
Note	For Research Use Only (RUO).
Protein Name	Creatine kinase S-type, mitochondrial Basic-type mitochondrial creatine kinase Mib-CK Sarcomeric mitochondrial creatine kinase S-MtCK
Molecular Weight	47kDa
Clonality	Monoclonal

Conjugation	Unconjugated
Isotype	IgG2b
Formulation	Liquid in PBS containing 50% glycerol, 0.5% BSA and 0.02% sodium azide.
Concentration	1 mg/ml
Storage Instruction	Store at -20°C, and avoid repeat freeze-thaw cycles.
Database Links	HGNC:1996OMIM:123295
Alternative Names	Creatine kinase S-type, mitochondrial Basic-type mitochondrial creatine kinase Mib-CK Sarcomeric mitochondrial creatine kinase S-MtCK
Function	Reversibly catalyzes the transfer of phosphate between ATP and various phosphogens (e.g. creatine phosphate). Creatine kinase isoenzymes play a central role in energy transduction in tissues with large, fluctuating energy demands, such as skeletal muscle, heart, brain and spermatozoa.
Cellular Localization	Mitochondrion inner membrane. Peripheral membrane protein. Intermembrane side.