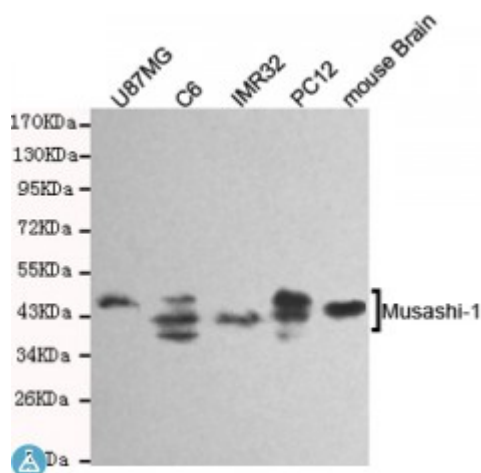


Anti-Musashi-1 antibody



Description	Mouse monoclonal to Musashi-1.
Model	STJ99158
Host	Mouse
Reactivity	Human, Mouse, Rat
Applications	ELISA, WB
Immunogen	Purified recombinant human Musashi-1 protein fragments expressed in E.coli.
Gene ID	4440
Gene Symbol	MSI1
Dilution range	WB 1:500-2000ELISA 1:10000-20000
Specificity	This antibody detects endogenous levels of Musashi-1 and does not cross-react with related proteins.
Tissue Specificity	Detected in fetal kidney, brain, liver and lung, and in adult brain and pancreas. Detected in hepatoma cell lines.
Purification	The antibody was affinity-purified from rabbit antiserum by affinity-chromatography using epitope-specific immunogen.
Clone ID	3F8-E6-B9
Note	For Research Use Only (RUO).
Protein Name	RNA-binding protein Musashi homolog 1 Musashi-1
Molecular Weight	39kDa
Clonality	Monoclonal

Conjugation	Unconjugated
Isotype	IgG2b
Formulation	Liquid in PBS containing 50% glycerol, 0.5% BSA and 0.02% sodium azide.
Concentration	1 mg/ml
Storage Instruction	Store at -20°C, and avoid repeat freeze-thaw cycles.
Database Links	HGNC:73300MIM:603328
Alternative Names	RNA-binding protein Musashi homolog 1 Musashi-1
Function	RNA binding protein that regulates the expression of target mRNAs at the translation level. Regulates expression of the NOTCH1 antagonist NUMB. Binds RNA containing the sequence 5'-GUUAGUUAGUUAGUU-3' and other sequences containing the pattern 5'-[GA]U(1-3)AGU-3'. May play a role in the proliferation and maintenance of stem cells in the central nervous system .
Sequence and Domain Family	The first RNA recognition motif binds more strongly to RNA compared to the second one.
Cellular Localization	Cytoplasm Nucleus

St John's Laboratory Ltd

F +44 (0)207 681 2580

T +44 (0)208 223 3081

W <http://www.stjohnslabs.com/>

E info@stjohnslabs.com