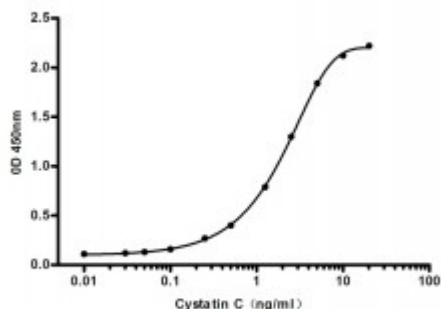


Anti-Cystatin C antibody



Description	Mouse monoclonal to Cystatin C.
Model	STJ99195
Host	Mouse
Reactivity	Human
Applications	ELISA, WB
Immunogen	Recombinant human cystatin c protein.
Gene ID	1471
Gene Symbol	CST3
Dilution range	WB 1:500-2000ELISA 1:10000-20000
Tissue Specificity	Expressed in submandibular and sublingual saliva but not in parotid saliva (at protein level). Expressed in various body fluids, such as the cerebrospinal fluid and plasma. Expressed in highest levels in the epididymis, vas deferens, brain, thymus, and ovary and the lowest in the submandibular gland.
Purification	The antibody was affinity-purified from rabbit antiserum by affinity-chromatography using epitope-specific immunogen.
Clone ID	6F12-C7-D8
Note	For Research Use Only (RUO).
Protein Name	Cystatin-C Cystatin-3 Gamma-trace Neuroendocrine basic polypeptide Post-gamma-globulin
Molecular Weight	13kDa

Clonality	Monoclonal
Conjugation	Unconjugated
Isotype	IgG1
Formulation	Liquid in PBS containing 50% glycerol, 0.5% BSA and 0.02% sodium azide.
Concentration	1 mg/ml
Storage Instruction	Store at -20°C, and avoid repeat freeze-thaw cycles.
Database Links	HGNC:2475OMIM:105150
Alternative Names	Cystatin-C Cystatin-3 Gamma-trace Neuroendocrine basic polypeptide Post-gamma-globulin
Function	As an inhibitor of cysteine proteinases, this protein is thought to serve an important physiological role as a local regulator of this enzyme activity.
Cellular Localization	Secreted
Post-translational Modifications	The Thr-25 variant is O-glycosylated with a core 1 or possibly core 8 glycan. The signal peptide of the O-glycosylated Thr-25 variant is cleaved between Ala-20 and Val-21.