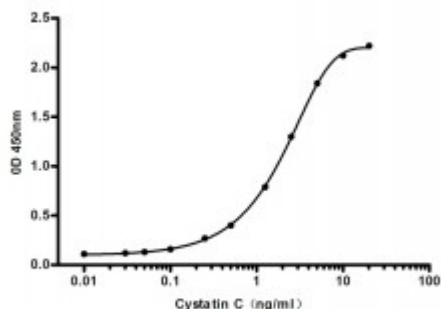


## Anti-Cystatin C antibody



<b>Description</b>	Mouse monoclonal to Cystatin C.
<b>Model</b>	STJ99196
<b>Host</b>	Mouse
<b>Reactivity</b>	Human
<b>Applications</b>	ELISA, WB
<b>Immunogen</b>	Recombinant human cystatin c protein.
<b>Gene ID</b>	<a href="#">1471</a>
<b>Gene Symbol</b>	<a href="#">CST3</a>
<b>Dilution range</b>	WB 1:500-2000ELISA 1:10000-20000
<b>Tissue Specificity</b>	Expressed in submandibular and sublingual saliva but not in parotid saliva (at protein level). Expressed in various body fluids, such as the cerebrospinal fluid and plasma. Expressed in highest levels in the epididymis, vas deferens, brain, thymus, and ovary and the lowest in the submandibular gland.
<b>Purification</b>	The antibody was affinity-purified from rabbit antiserum by affinity-chromatography using epitope-specific immunogen.
<b>Clone ID</b>	7F6-A5-F3
<b>Note</b>	For Research Use Only (RUO).
<b>Protein Name</b>	Cystatin-C Cystatin-3 Gamma-trace Neuroendocrine basic polypeptide Post-gamma-globulin
<b>Molecular Weight</b>	13kDa

<b>Clonality</b>	Monoclonal
<b>Conjugation</b>	Unconjugated
<b>Isotype</b>	IgG1
<b>Formulation</b>	Liquid in PBS containing 50% glycerol, 0.5% BSA and 0.02% sodium azide.
<b>Concentration</b>	1 mg/ml
<b>Storage Instruction</b>	Store at -20°C, and avoid repeat freeze-thaw cycles.
<b>Database Links</b>	<a href="https://www.ncbi.nlm.nih.gov/condensedset/HGNC:2475OMIM:105150">HGNC:2475OMIM:105150</a>
<b>Alternative Names</b>	Cystatin-C Cystatin-3 Gamma-trace Neuroendocrine basic polypeptide Post-gamma-globulin
<b>Function</b>	As an inhibitor of cysteine proteinases, this protein is thought to serve an important physiological role as a local regulator of this enzyme activity.
<b>Cellular Localization</b>	Secreted
<b>Post-translational Modifications</b>	The Thr-25 variant is O-glycosylated with a core 1 or possibly core 8 glycan. The signal peptide of the O-glycosylated Thr-25 variant is cleaved between Ala-20 and Val-21.