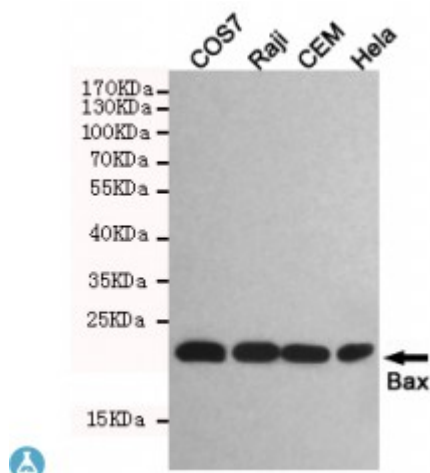


Anti-Bax antibody



Description	Mouse monoclonal to Bax.
Model	STJ99209
Host	Mouse
Reactivity	Human, Simian
Applications	ELISA, WB
Immunogen	Purified recombinant human Bax protein fragments expressed in E.coli
Gene ID	581
Gene Symbol	BAX
Dilution range	WB 1:500-2000ELISA 1:10000-20000
Specificity	This antibody detects endogenous levels of Bax and does not cross-react with related proteins.
Tissue Specificity	Expressed in a wide variety of tissues. Isoform Psi is found in glial tumors. Isoform Alpha is expressed in spleen, breast, ovary, testis, colon and brain, and at low levels in skin and lung. Isoform Sigma is expressed in spleen, breast, ovary, testis, lung, colon, brain and at low levels in skin. Isoform Alpha and isoform Sigma are expressed in pro-myelocytic leukemia, histiocytic lymphoma, Burkitt's lymphoma, T-cell lymphoma, lymphoblastic leukemia, breast adenocarcinoma, ovary adenocarcinoma, prostate c
Purification	The antibody was affinity-purified from rabbit antiserum by affinity-chromatography using epitope-specific immunogen.
Clone ID	2B12-G6-H6

Note	For Research Use Only (RUO).
Protein Name	Apoptosis regulator BAX Bcl-2-like protein 4 Bcl2-L-4
Molecular Weight	20kDa
Clonality	Monoclonal
Conjugation	Unconjugated
Isotype	IgG2a
Formulation	Liquid in PBS containing 50% glycerol, 0.5% BSA and 0.02% sodium azide.
Concentration	1 mg/ml
Storage Instruction	Store at -20°C, and avoid repeat freeze-thaw cycles.
Database Links	HGNC:959OMIM:600040
Alternative Names	Apoptosis regulator BAX Bcl-2-like protein 4 Bcl2-L-4
Function	Accelerates programmed cell death by binding to, and antagonizing the apoptosis repressor BCL2 or its adenovirus homolog E1B 19k protein. Under stress conditions, undergoes a conformation change that causes translocation to the mitochondrion membrane, leading to the release of cytochrome c that then triggers apoptosis. Promotes activation of CASP3, and thereby apoptosis.
Sequence and Domain Family	Intact BH3 motif is required by BIK, BID, BAK, BAD and BAX for their pro-apoptotic activity and for their interaction with anti-apoptotic members of the Bcl-2 family.
Cellular Localization	Isoform Alpha: Mitochondrion membrane. Single-pass membrane protein. Cytoplasm. Colocalizes with 14-3-3 proteins in the cytoplasm. Under stress conditions, undergoes a conformation change that causes release from JNK-phosphorylated 14-3-3 proteins and translocation to the mitochondrion membrane.. Isoform Beta: Cytoplasm.. Isoform Gamma: Cytoplasm.. Isoform Delta: Cytoplasm