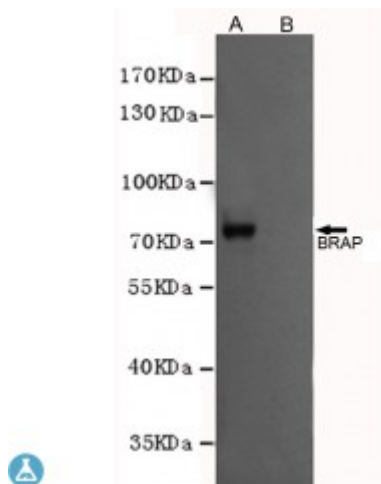


Anti-BRAP antibody



Description	Mouse monoclonal to BRAP.
Model	STJ99215
Host	Mouse
Reactivity	Human
Applications	ELISA, WB
Immunogen	Purified recombinant human BRAP protein fragments expressed in E.coli.
Gene ID	8315
Gene Symbol	BRAP
Dilution range	WB 1:500-2000ELISA 1:10000-20000
Specificity	This antibody detects endogenous levels of BRAP and does not cross-react with related proteins.
Tissue Specificity	Expressed in breast epithelial cell lines.
Purification	The antibody was affinity-purified from rabbit antiserum by affinity-chromatography using epitope-specific immunogen.
Clone ID	1E7-C9-D10-B10
Note	For Research Use Only (RUO).
Protein Name	BRCA1-associated protein BRAP2 Impedes mitogenic signal propagation IMP RING finger protein 52 RING-type E3 ubiquitin transferase BRAP2 Renal carcinoma antigen NY-REN-63
Molecular Weight	67kDa

Clonality	Monoclonal
Conjugation	Unconjugated
Isotype	IgG1
Formulation	Liquid in PBS containing 50% glycerol, 0.5% BSA and 0.02% sodium azide.
Concentration	1 mg/ml
Storage Instruction	Store at -20°C, and avoid repeat freeze-thaw cycles.
Database Links	HGNC:10990MIM:604986
Alternative Names	BRCA1-associated protein BRAP2 Impedes mitogenic signal propagation IMP RING finger protein 52 RING-type E3 ubiquitin transferase BRAP2 Renal carcinoma antigen NY-REN-63
Function	Negatively regulates MAP kinase activation by limiting the formation of Raf/MEK complexes probably by inactivation of the KSR1 scaffold protein. Also acts as a Ras responsive E3 ubiquitin ligase that, on activation of Ras, is modified by auto-polyubiquitination resulting in the release of inhibition of Raf/MEK complex formation. May also act as a cytoplasmic retention protein with a role in regulating nuclear transport.
Cellular Localization	Cytoplasm

St John's Laboratory Ltd

F +44 (0)207 681 2580

T +44 (0)208 223 3081

W <http://www.stjohnslabs.com/>

E info@stjohnslabs.com