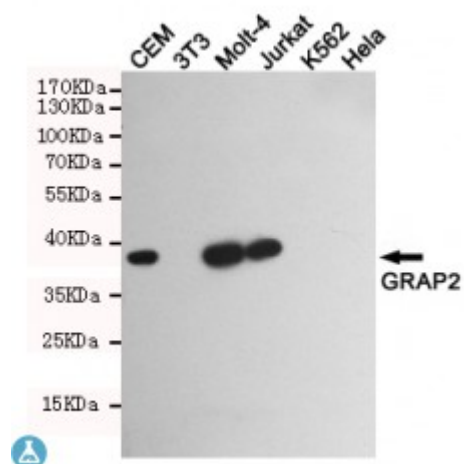


Anti-GRAP2 antibody



Description	Mouse monoclonal to GRAP2.
Model	STJ99275
Host	Mouse
Reactivity	Human
Applications	ELISA, WB
Immunogen	Recombinant peptide derived from human GRAP2.
Gene ID	9402
Gene Symbol	GRAP2
Dilution range	WB 1:500-2000ELISA 1:10000-20000
Specificity	This antibody detects endogenous levels of GRAP2 and does not cross-react with related proteins.
Purification	The antibody was affinity-purified from rabbit antiserum by affinity-chromatography using epitope-specific immunogen.
Clone ID	5C7-F4-E7
Note	For Research Use Only (RUO).
Protein Name	GRB2-related adapter protein 2 Adapter protein GRID GRB-2-like protein GRB2L GRBLG GRBX Grf40 adapter protein Grf-40 Growth factor receptor-binding protein Hematopoietic cell-associated adapter protein
Molecular Weight	38kDa
Clonality	Monoclonal

Conjugation	Unconjugated
Isotype	IgG2b
Formulation	Liquid in PBS containing 50% glycerol, 0.5% BSA and 0.02% sodium azide.
Concentration	1 mg/ml
Storage Instruction	Store at -20°C, and avoid repeat freeze-thaw cycles.
Database Links	HGNC:4563OMIM:604518
Alternative Names	GRB2-related adapter protein 2 Adapter protein GRID GRB-2-like protein GRB2L GRBLG GRBX Grf40 adapter protein Grf-40 Growth factor receptor-binding protein Hematopoietic cell-associated adapter protein
Function	Interacts with SLP-76 to regulate NF-AT activation. Binds to tyrosine-phosphorylated shc.
Cellular Localization	Nucleus Cytoplasm Endosome

St John's Laboratory Ltd

F +44 (0)207 681 2580

T +44 (0)208 223 3081

W <http://www.stjohnslabs.com/>

E info@stjohnslabs.com