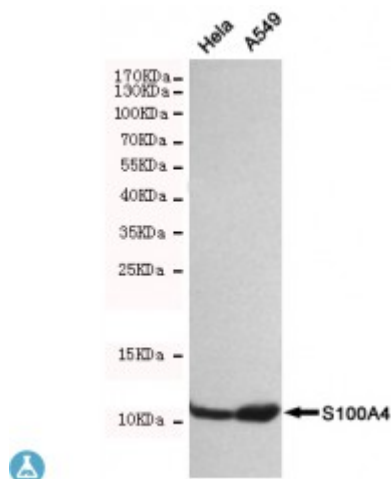


Anti-S100A4 antibody



Description	Mouse monoclonal to S100A4.
Model	STJ99280
Host	Mouse
Reactivity	Human
Applications	ELISA, WB
Immunogen	Recombinant human S100A4 protein.
Gene ID	6275
Gene Symbol	S100A4
Dilution range	WB 1:500-2000ELISA 1:10000-20000
Specificity	This antibody detects endogenous levels of S100A4 and does not cross-react with related proteins.
Tissue Specificity	Ubiquitously expressed.
Purification	The antibody was affinity-purified from rabbit antiserum by affinity-chromatography using epitope-specific immunogen.
Clone ID	3D10-B4-D10
Note	For Research Use Only (RUO).
Protein Name	Protein S100-A4 Calvasculin Metastasin Placental calcium-binding protein Protein Mts1 S100 calcium-binding protein A4
Molecular Weight	12kDa
Clonality	Monoclonal

Conjugation	Unconjugated
Isotype	IgG1
Formulation	Liquid in PBS containing 50% glycerol, 0.5% BSA and 0.02% sodium azide.
Concentration	1 mg/ml
Storage Instruction	Store at -20°C, and avoid repeat freeze-thaw cycles.
Database Links	HGNC:10494OMIM:114210
Alternative Names	Protein S100-A4 Calvasculin Metastasin Placental calcium-binding protein Protein Mts1 S100 calcium-binding protein A4

St John's Laboratory Ltd

F +44 (0)207 681 2580

T +44 (0)208 223 3081

W <http://www.stjohnslabs.com/>

E info@stjohnslabs.com