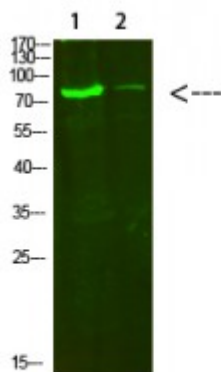


Anti-COL8A2 antibody



Description	Rabbit polyclonal to COL8A2.
Model	STJ99330
Host	Rabbit
Reactivity	Human, Mouse, Rat
Applications	ELISA, WB
Immunogen	Synthesized peptide derived from human COL8A2.
Immunogen Region	611-660aa
Gene ID	1296
Gene Symbol	COL8A2
Dilution range	WB 1:500-2000ELISA 1:10000-20000
Specificity	COL8A2 Polyclonal Antibody detects endogenous levels of COL8A2.
Tissue Specificity	Expressed primarily in the subendothelium of large blood vessels. Also expressed in arterioles and venules in muscle, heart, kidney, spleen, umbilical cord, liver and lung and is also found in connective tissue layers around hair follicles, around nerve bundles in muscle, in the dura of the optic nerve, in cornea and sclera, and in the perichondrium of cartilaginous tissues. In the kidney, expressed in mesangial cells, glomerular endothelial cells, and tubular epithelial cells. Also expressed in mast cells
Purification	The antibody was affinity-purified from rabbit antiserum by affinity-chromatography using epitope-specific immunogen.
Note	For Research Use Only (RUO).

Protein Name	Collagen alpha-2 VIII chain Endothelial collagen
Molecular Weight	80kDa
Clonality	Polyclonal
Conjugation	Unconjugated
Isotype	IgG
Formulation	Liquid in PBS containing 50% glycerol, 0.5% BSA and 0.02% sodium azide.
Concentration	1 mg/ml
Storage Instruction	Store at -20°C, and avoid repeat freeze-thaw cycles.
Database Links	HGNC:22160MIM:120252
Alternative Names	Collagen alpha-2 VIII chain Endothelial collagen
Function	Macromolecular component of the subendothelium. Major component of the Descemet's membrane (basement membrane) of corneal endothelial cells. Also component of the endothelia of blood vessels. Necessary for migration and proliferation of vascular smooth muscle cells and thus, has a potential role in the maintenance of vessel wall integrity and structure, in particular in atherogenesis .
Cellular Localization	Secreted, extracellular space, extracellular matrix, basement membrane.
Post-translational Modifications	Proteolytically cleaved by neutrophil elastase, in vitro. Prolines at the third position of the tripeptide repeating unit (G-X-Y) are hydroxylated in some or all of the chains.