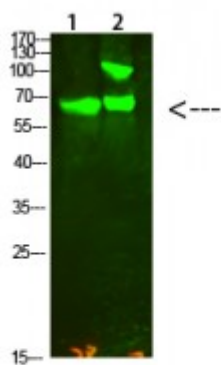


Anti-COL13A1 antibody



Description	Rabbit polyclonal to COL13A1.
Model	STJ99344
Host	Rabbit
Reactivity	Human, Mouse
Applications	ELISA, WB
Immunogen	Synthesized peptide derived from human COL13A1.
Immunogen Region	41-90aa
Gene ID	1305
Gene Symbol	COL13A1
Dilution range	WB 1:500-2000ELISA 1:10000-20000
Specificity	COL13A1 Polyclonal Antibody detects endogenous levels of COL13A1.
Tissue Specificity	Widely expressed in both fetal and adult ocular tissues (at protein level). In the eye, expression is accentuated in the ciliary muscle, optic nerve and the neural retina. In early placenta, localized to fibroblastoid stromal cells of the placental villi, to endothelial cells of developing capillaries and to cells of the cytotrophoblastic columns. Also detected in large decidual cells of the decidual membrane and to stromal cells of the gestational endometrium, but not in the epithelial cells in the endome
Purification	The antibody was affinity-purified from rabbit antiserum by affinity-chromatography using epitope-specific immunogen.
Note	For Research Use Only (RUO).

Protein Name	Collagen alpha-1 XIII chain COLXIII A1
Molecular Weight	70kDa
Clonality	Polyclonal
Conjugation	Unconjugated
Isotype	IgG
Formulation	Liquid in PBS containing 50% glycerol, 0.5% BSA and 0.02% sodium azide.
Concentration	1 mg/ml
Storage Instruction	Store at -20°C, and avoid repeat freeze-thaw cycles.
Database Links	HGNC:21900MIM:120350
Alternative Names	Collagen alpha-1 XIII chain COLXIII A1
Function	Involved in cell-matrix and cell-cell adhesion interactions that are required for normal development. May participate in the linkage between muscle fiber and basement membrane. May play a role in endochondral ossification of bone and branching morphogenesis of lung. Binds heparin. At neuromuscular junctions, may play a role in acetylcholine receptor clustering .
Cellular Localization	Cell membrane Cell junction, synapse, postsynaptic cell membrane

St John's Laboratory Ltd

F +44 (0)207 681 2580

T +44 (0)208 223 3081

W <http://www.stjohnslabs.com/>

E info@stjohnslabs.com