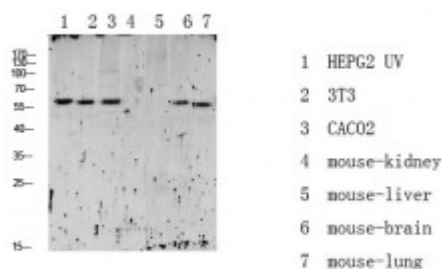


Anti-Phospho-RIPK2 (Ser176) antibody



Description	Rabbit polyclonal to Phospho-RIPK2 (Ser176).
Model	STJ99600
Host	Rabbit
Reactivity	Human, Mouse, Rat
Applications	ELISA, WB
Immunogen	Synthesized phospho derived from human RIPK2 (Phospho-Ser176).
Immunogen Region	Phospho-Ser176
Gene ID	8767
Gene Symbol	RIPK2
Dilution range	WB 1:500-2000ELISA 1:10000-20000
Specificity	This antibody detects endogenous levels of RIPK2 (Phospho-Ser176).
Tissue Specificity	Detected in heart, brain, placenta, lung, peripheral blood leukocytes, spleen, kidney, testis, prostate, pancreas and lymph node.
Purification	The antibody was affinity-purified from rabbit antiserum by affinity-chromatography using epitope-specific immunogen.
Note	For Research Use Only (RUO).
Protein Name	Receptor-interacting serine/threonine-protein kinase 2 CARD-containing interleukin-1 beta-converting enzyme-associated kinase CARD-containing IL-1 beta ICE-kinase RIP-like-interacting CLARP kinase Receptor-interacting protein 2