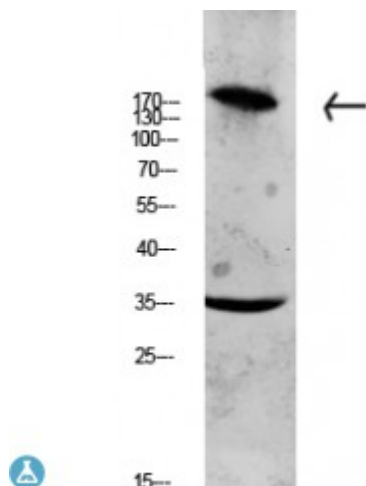


Anti-Collagen XI alpha antibody



Description	Rabbit polyclonal to Collagen XI alpha1.
Model	STJ99643
Host	Rabbit
Reactivity	Human, Mouse, Rat
Applications	ELISA, WB
Immunogen	Synthesized peptide derived from human Collagen XI alpha1.
Gene ID	1301
Gene Symbol	COL11A1
Dilution range	WB 1:500-2000ELISA 1:10000-20000
Specificity	This antibody detects endogenous levels of Collagen XI alpha1.
Tissue Specificity	Cartilage, placenta and some tumor or virally transformed cell lines. Isoforms using exon IIA or IIB are found in the cartilage while isoforms using only exon IIB are found in the tendon.
Purification	The antibody was affinity-purified from rabbit antiserum by affinity-chromatography using epitope-specific immunogen.
Note	For Research Use Only (RUO).
Protein Name	Collagen alpha-1 XI chain
Molecular Weight	180 kDa
Clonality	Polyclonal
Conjugation	Unconjugated

Isotype	IgG
Formulation	Liquid in PBS containing 50% glycerol, 0.5% BSA and 0.02% sodium azide.
Concentration	1 mg/ml
Storage Instruction	Store at -20°C, and avoid repeat freeze-thaw cycles.
Database Links	HGNC:2186OMIM:120280
Alternative Names	Collagen alpha-1 XI chain
Function	May play an important role in fibrillogenesis by controlling lateral growth of collagen II fibrils.
Sequence and Domain Family	The C-terminal propeptide, also known as COLFI domain, have crucial roles in tissue growth and repair by controlling both the intracellular assembly of procollagen molecules and the extracellular assembly of collagen fibrils. It binds a calcium ion which is essential for its function .
Cellular Localization	Secreted, extracellular space, extracellular matrix
Post-translational Modifications	Prolines at the third position of the tripeptide repeating unit (G-X-Y) are hydroxylated in some or all of the chains.; N-glycosylated.

St John's Laboratory Ltd

F +44 (0)207 681 2580

T +44 (0)208 223 3081

W <http://www.stjohnslabs.com/>

E info@stjohnslabs.com