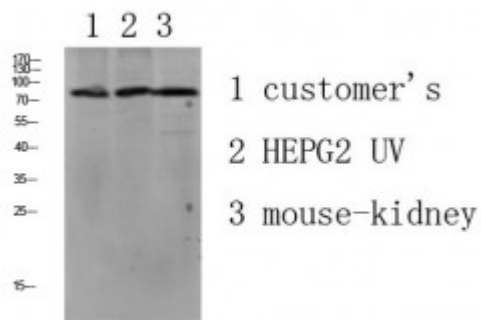


Anti-LSHR antibody



Description	Rabbit polyclonal to LSHR.
Model	STJ99657
Host	Rabbit
Reactivity	Human, Mouse, Rat
Applications	ELISA, WB
Immunogen	Synthesized peptide derived from human LSHR.
Gene ID	3973
Gene Symbol	LHCGR
Dilution range	WB 1:500-2000ELISA 1:10000-20000
Specificity	This antibody detects endogenous levels of LSHR.
Tissue Specificity	Gonadal and thyroid cells.
Purification	The antibody was affinity-purified from rabbit antiserum by affinity-chromatography using epitope-specific immunogen.
Note	For Research Use Only (RUO).
Protein Name	Lutropin-choriogonadotropic hormone receptor LH/CG-R Luteinizing hormone receptor LHR LSH-R
Molecular Weight	80 kDa
Clonality	Polyclonal
Conjugation	Unconjugated

Isotype	IgG
Formulation	Liquid in PBS containing 50% glycerol, 0.5% BSA and 0.02% sodium azide.
Concentration	1 mg/ml
Storage Instruction	Store at -20°C, and avoid repeat freeze-thaw cycles.
Database Links	HGNC:6585OMIM:152790
Alternative Names	Lutropin-choriogonadotropic hormone receptor LH/CG-R Luteinizing hormone receptor LHR LSH-R
Function	Receptor for lutropin-choriogonadotropic hormone . The activity of this receptor is mediated by G proteins which activate adenylate cyclase .
Cellular Localization	Cell membrane
Post-translational Modifications	Sulfated.

St John's Laboratory Ltd

F +44 (0)207 681 2580

T +44 (0)208 223 3081

W <http://www.stjohnslabs.com/>

E info@stjohnslabs.com