

Anti-STIP1 antibody (1-300) (STJ116041)

STJ116041

GENERAL INFORMATION

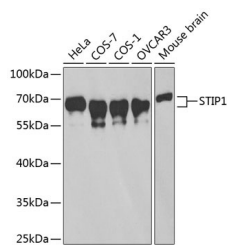
Product Type	Primary antibodies
Short Description	Rabbit polyclonal antibody anti-STIP1 (1-300) is suitable for use in Western Blot, Immunohistochemistry, Immunofluorescence and Immunoprecipitation.
Applications	WB, IHC, IF, IP
Host/Source	Rabbit
Reactivity	Human, Mouse, Rat, Monkey

PRODUCT PROPERTIES

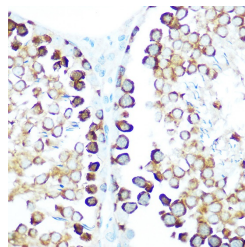
Clonality	Polyclonal
Clone ID	
Concentration	
Conjugation	Unconjugated
Purification	Affinity purification
Dilution Range	WB 1:500-1:2000 IHC 1:50-1:200 IF 1:50-1:200 IP 1:20-1:50
Formulation	PBS containing 0.02% Sodium Azide, 50% Glycerol, pH7.3.
Isotype	IgG
Storage Instruction	Store in a freezer at -20°C and avoid freeze-thaw cycles.

TARGET INFORMATION

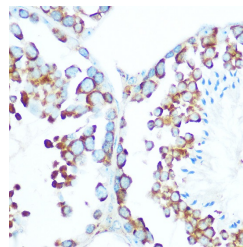
Gene ID	10963
Gene Symbol	STIP1
Uniprot ID	STIP1_HUMAN
Immunogen	Recombinant fusion protein containing a sequence corresponding to amino acids 1-300 of human STIP1 (NP_006810.1).
Immunogen Region	1-300
Specificity	
Immunogen Sequence	



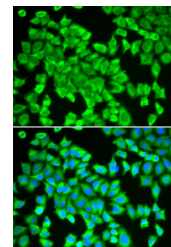
Western blot analysis of extracts of various cell lines, using STIP1 antibody (STJ116041) at 1:1000 dilution. Secondary antibody: HRP Goat Anti-rabbit IgG (H+L) at 1:10000 dilution. Lysates/proteins: 25µg per lane. Blocking buffer: 3% nonfat dry milk in TBST.



Immunohistochemistry of paraffin-embedded rat testis using STIP1 rabbit polyclonal antibody (STJ116041) at dilution of 1:100 (40x lens).



Immunohistochemistry of paraffin-embedded mouse testis using STIP1 rabbit polyclonal antibody (STJ116041) at dilution of 1:100 (40x lens).



Immunofluorescence analysis of HeLa cells using STIP1 antibody (STJ116041). Blue: DAPI for nuclear staining.

This product is suitable for in-vitro studies under the RESEARCH USE ONLY [RUO] licence. This product must not be used as for diagnostic or other medical purposes.
St John's Laboratory Ltd, Knowledge Dock Business Centre, University Way, London, E16 2RD | Tel: 0208 223 3081