

Anti-CALB1 antibody (Internal) (STJ13100100)
STJ13100100

GENERAL INFORMATION

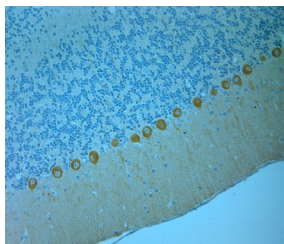
| | |
|--------------------------|---|
| Product Type | Primary antibodies |
| Short Description | Nz White Rabbit polyclonal antibody anti-CALB1 (Internal) is suitable for use in Immunohistochemistry and Western Blot research applications. |
| Applications | IHC, WB |
| Host/Source | NZ White Rabbit |
| Reactivity | Human, Rat, Mouse |

PRODUCT PROPERTIES

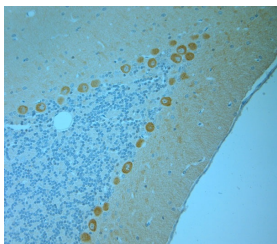
| | |
|-----------------------|--|
| Clonality | Polyclonal |
| Clone ID | |
| Concentration | |
| Conjugation | Unconjugated |
| Purification | Whole serum |
| Dilution Range | A dilution of 1:200 to 1:2000 is recommended. The optimal dilution should be determined by the end user. Not yet tested in other applications. |
| Formulation | Shipped as lyophilised. Reconstitute in 100 µl of sterile water. Centrifuge to remove any insoluble material. |
| Isotype | IgG |
| Storage | Maintain the lyophilised/reconstituted antibodies frozen at -20°C for long term storage and refrigerated at 2-8°C for a shorter term. |
| Instruction | When reconstituting, glycerol (1:1) may be added for an additional stability. Avoid freeze and thaw cycles. |

TARGET INFORMATION

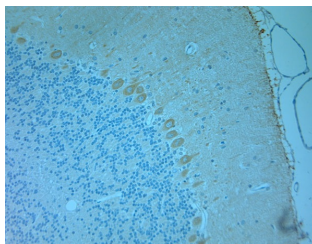
| | |
|---------------------------|---|
| Gene ID | 793 |
| Gene Symbol | CALB1 |
| Uniprot ID | CALB1_HUMAN |
| Immunogen | A synthetic peptide from the internal region of human Calbindin conjugated to blue carrier protein was used as the antigen. The peptide is homologous in rat and mouse. |
| Immunogen Region | Internal |
| Specificity | Specific for Calbindin. |
| Immunogen Sequence | |



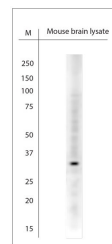
IHC on paraffin sections of rat cerebellum tissue. The animal was perfused using Autoperfuser at a pressure of 110 mmHg with 300 ml 4% FA and further post fixed overnight before being processed for paraffin embedding. HIER: Tris-EDTA, pH 9 for 20 min using Thermo PT Module. Blocking: 0.2% LFDM in TBST filtered thru 0.2 µm. Detection was done using Novolink HRP polymer from Leica following manufacturer's instructions. Primary antibody dilution 1: 1000, incubated 30 min at RT (using Autostainer) . Sections were counterstained with Harris Hematoxylin.



IHC on paraffin sections of rat cerebellum tissue. The animal was perfused using Autoperfuser at a pressure of 110 mmHg with 300 ml 4% FA and further post fixed overnight before being processed for paraffin embedding. HIER: Tris-EDTA, pH 9 for 20 min using Thermo PT Module. Blocking: 0.2% LFDM in TBST filtered thru 0.2 µm. Detection was done using Novolink HRP polymer from Leica following manufacturer's instructions. Primary antibody dilution 1: 1000, incubated 30 min at RT (using Autostainer) . Sections were counterstained with Harris Hematoxylin.



IHC on paraffin sections of rat cerebellum tissue. The animal was perfused using Autoperfuser at a pressure of 110 mmHg with 300 ml 4% FA and further post fixed overnight before being processed for paraffin embedding. HIER: Tris-EDTA, pH 9 for 20 min using Thermo PT Module. Blocking: 0.2% LFDM in TBST filtered thru 0.2 µm. Detection was done using Novolink HRP polymer from Leica following manufacturer's instructions. Primary antibody dilution 1: 1000, incubated 30 min at RT (using Autostainer) . Sections were counterstained with Harris Hematoxylin.



WB on mouse brain lysate. Blocking with 0.5% LFDM for 1 hour at RT. Primary antibody used at 1: 500 dilution incubated overnight at 4C

This product is suitable for in-vitro studies under the RESEARCH USE ONLY [RUO] licence. This product must not be used as for diagnostic or other medical purposes.
St John's Laboratory Ltd, Knowledge Dock Business Centre, University Way, London, E16 2RD | Tel: 0208 223 3081