

Anti-SOD1 antibody (40-90) (STJ13100354)

STJ13100354

GENERAL INFORMATION

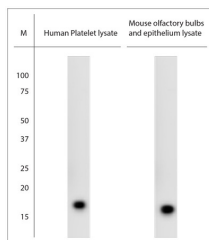
Product Type	Primary antibodies
Short Description	Nz White Rabbit polyclonal antibody anti-SOD1 (40-90) is suitable for use in Immunohistochemistry and Western Blot research applications.
Applications	IHC, WB
Host/Source	NZ White Rabbit
Reactivity	Human

PRODUCT PROPERTIES

Clonality	Polyclonal
Clone ID	
Concentration	
Conjugation	Unconjugated
Purification	Whole serum
Dilution Range	A dilution of 1:3000 is recommended for WB and to 1:1000 for IHC-P. The optimal dilution should be determined by the end user. Not yet tested in other applications.
Formulation	Shipped as lyophilised. Reconstitute in 150 µl of sterile water. Centrifuge to remove any insoluble material.
Isotype	IgG
Storage	Maintain the lyophilised/reconstituted antibodies frozen at -20°C for long term storage and refrigerated at 2-8°C for a shorter term.
Instruction	When reconstituting, glycerol (1:1) may be added for an additional stability. Avoid freeze and thaw cycles.

TARGET INFORMATION

Gene ID	6647
Gene Symbol	SOD1
Uniprot ID	SODC_HUMAN
Immunogen	A synthetic peptide from aa region 40-90 of human SOD1 conjugated to blue carrier protein was used as the antigen. The antigen is homologous in rat and mouse.
Immunogen Region	40-90
Specificity	Specific for SOD1.
Immunogen Sequence	



WB on different lysates. Blocking: 1% LFDM for 30 min at RT; primary antibody dilution 1: 3000 incubated at 4°C overnight.

This product is suitable for in-vitro studies under the RESEARCH USE ONLY [RUO] licence. This product must not be used as for diagnostic or other medical purposes.
St John's Laboratory Ltd, Knowledge Dock Business Centre, University Way, London, E16 2RD | Tel: 0208 223 3081