

Anti-TUBB antibody (C-Term) (STJ13100428)

STJ13100428

GENERAL INFORMATION

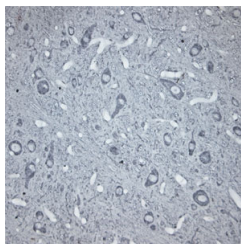
Product Type	Primary antibodies
Short Description	Nz White Rabbit polyclonal antibody anti-beta Tubulin (C-Term) is suitable for use in Immunohistochemistry and Western Blot research applications.
Applications	IHC, WB
Host/Source	NZ White Rabbit
Reactivity	Mouse, Rat, Human, Xenopus, Zebrafish

PRODUCT PROPERTIES

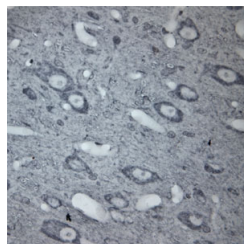
Clonality	Polyclonal
Clone ID	
Concentration	
Conjugation	Unconjugated
Purification	Whole serum
Dilution Range	A dilution of 1:100 to 1:2000 is recommended. The optimal dilution should be determined by the end user. Not yet tested in other applications.
Formulation	Shipped as lyophilised. Reconstitute in 150 µl of sterile water. Centrifuge to remove any insoluble material.
Isotype	IgG
Storage	Maintain the lyophilised/reconstituted antibodies frozen at -20°C for long term storage and refrigerated at 2-8°C for a shorter term.
Instruction	When reconstituting, glycerol (1:1) may be added for an additional stability. Avoid freeze and thaw cycles.

TARGET INFORMATION

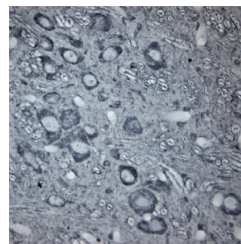
Gene ID	203068
Gene Symbol	TUBB
Uniprot ID	TBB5_HUMAN
Immunogen	A synthetic peptide from the c-terminal region of human Tubulin beta chain conjugated to blue carrier protein was used as the antigen. The peptide is homologous in many other species including rat, mouse, zebrafish and xenopus.
Immunogen Region	C-Term
Specificity	Specific for Tubulin beta chain.
Immunogen Sequence	



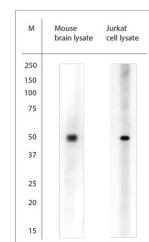
IHC on rat spinal cord (paraffin section) using Rabbit antibody to beta Tubulin (STJ13100428) at 1:200 dilution incubated overnight at 4C, developed with DAB/Ni.



IHC on rat spinal cord (paraffin section) using Rabbit antibody to c-terminal region of Tubulin beta chain (TUBB5, TUBB2) : whole serum (STJ13100428) at 1:200 dilution incubated overnight at 4C, developed with DAB/Ni.



IHC on rat spinal cord (paraffin section) using Rabbit antibody to c-terminal region of Tubulin beta chain (TUBB5, TUBB2) : whole serum (STJ13100428) at 1:200 dilution incubated overnight at 4C, developed with DAB/Ni.



WB on mouse brain lysate and Jurkat cell lysate. Blocking with 1% LFDM for 30 min at RT; Primary antibody used at 1:2000 dilution incubated overnight at 4C.

This product is suitable for in-vitro studies under the RESEARCH USE ONLY [RUO] licence. This product must not be used as for diagnostic or other medical purposes.
St John's Laboratory Ltd, Knowledge Dock Business Centre, University Way, London, E16 2RD | Tel: 0208 223 3081