

Anti-Phospho-MAPK3-T202 antibody (STJ22261)

STJ22261

GENERAL INFORMATION

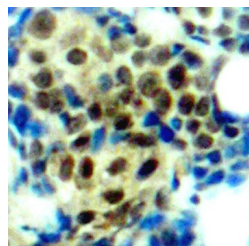
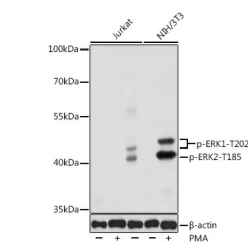
Product Type	Primary antibodies
Short Description	Rabbit polyclonal antibody anti-Phospho-MAPK3-T202 is suitable for use in Western Blot, Immunohistochemistry and Immunofluorescence.
Applications	WB, IHC, IF
Host/Source	Rabbit
Reactivity	Human, Mouse, Rat

PRODUCT PROPERTIES

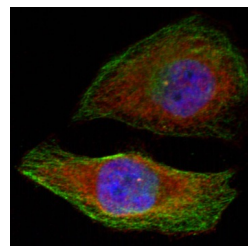
Clonality	Polyclonal
Clone ID	
Concentration	
Conjugation	Unconjugated
Purification	Affinity purification
Dilution Range	WB 1:500-1:2000 IHC 1:50-1:100 IF 1:100-1:200
Formulation	PBS containing 0.02% Sodium Azide, 50% Glycerol, pH7.3.
Isotype	IgG
Storage Instruction	Store in a freezer at -20°C and avoid freeze-thaw cycles.

TARGET INFORMATION

Gene ID	5594 5595
Gene Symbol	MAPK1 MAPK3
Uniprot ID	MK01_HUMAN MK03_HUMAN
Immunogen	A phospho specific peptide corresponding to residues surrounding T202/T185 of human ERK1/ERK2
Immunogen Region	
Specificity	
Immunogen Sequence	



Immunohistochemistry of paraffin-embedded human breast carcinoma tissue, using Phospho-ERK1-T202 antibody (STJ22261).



Immunofluorescence analysis of methanol-fixed HeLa cells showing cytoplasmic, nuclear staining using Phospho-ERK1-T202 antibody (STJ22261).

This product is suitable for in-vitro studies under the RESEARCH USE ONLY [RUO] licence. This product must not be used as for diagnostic or other medical purposes.

St John's Laboratory Ltd, Knowledge Dock Business Centre, University Way, London, E16 2RD | Tel: 0208 223 3081