

Anti-Di-Methyl-Histone H3-R2 antibody (Around R2) (STJ24011)

STJ24011

GENERAL INFORMATION

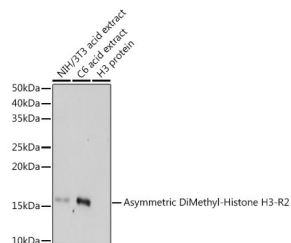
Product Type	Primary antibodies
Short Description	Rabbit polyclonal antibody anti-Di-Methyl-Asymmetric Histone H3-R2 (Around R2) is suitable for use in Western Blot, Immunohistochemistry, Immunofluorescence and Immunoprecipitation.
Applications	WB, IHC, IF, IP
Host/Source	Rabbit
Reactivity	Human, Mouse, Rat

PRODUCT PROPERTIES

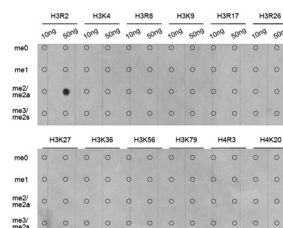
Clonality	Polyclonal
Clone ID	
Concentration	
Conjugation	Unconjugated
Purification	Affinity purification
Dilution Range	WB 1:500-1:2000 IHC 1:50-1:200 IF 1:50-1:200 IP 1:50-1:200 ChIP 1:20-1:100 ChIP-seq 1:20-1:100
Formulation	PBS containing 0.02% Sodium Azide, 50% Glycerol, pH7.3.
Isotype	IgG
Storage	Store in a freezer at -20°C and avoid freeze-thaw cycles.
Instruction	

TARGET INFORMATION

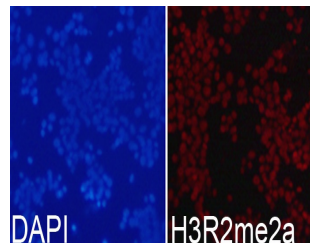
Gene ID	8290
Gene Symbol	H3-4
Uniprot ID	H31T_HUMAN
Immunogen	A synthetic methylated peptide corresponding to residues surrounding R2 of human histone H3
Immunogen Region	Around R2
Specificity	
Immunogen Sequence	



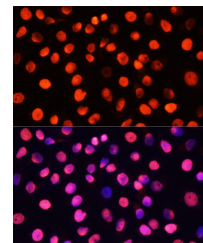
Western blot analysis of extracts of various cell lines, using Asymmetric DiMethyl-Histone H3-R2 antibody (STJ24011) at 1:500 dilution. Secondary antibody: HRP Goat Anti-rabbit IgG (H+L) at 1:10000 dilution. Lysates/proteins: 25ug per lane. Blocking buffer: 3% nonfat dry milk in TBST. Detection: ECL Enhanced Kit. Exposure time: 180s.



Dot-blot analysis of all sorts of methylation peptides using Asymmetric DiMethyl-Histone H3-R2 antibody (STJ24011).



Immunofluorescence analysis of 293T cells using Asymmetric DiMethyl-Histone H3-R2 antibody (STJ24011). Blue: DAPI for nuclear staining.



Immunofluorescence analysis of HeLa cells using Asymmetric DiMethyl-Histone H3-R2 antibody (STJ24011) at dilution of 1:100. Blue: DAPI for nuclear staining.

This product is suitable for in-vitro studies under the RESEARCH USE ONLY [RUO] licence. This product must not be used as for diagnostic or other medical purposes.
St John's Laboratory Ltd, Knowledge Dock Business Centre, University Way, London, E16 2RD | Tel: 0208 223 3081