

## Anti-SYP antibody (1-100) (STJ503185)

STJ503185

### GENERAL INFORMATION

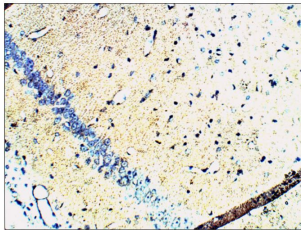
<b>Product Type</b>	Primary antibodies
<b>Short Description</b>	Rabbit polyclonal antibody anti-SYP (1-100) is suitable for use in Confocal Microscopy, ELISA, Immunocytochemistry, Immunofluorescence, Immunohistochemistry, Immunoprecipitation and Western Blot research applications.
<b>Applications</b>	CM, ELISA, ICC, IF, IHC, IP, WB
<b>Host/Source</b>	Rabbit
<b>Reactivity</b>	Chicken, Human, Monkey, Mouse, Rat

### PRODUCT PROPERTIES

<b>Clonality</b>	Polyclonal
<b>Clone ID</b>	
<b>Concentration</b>	0.60-0.62 µg/µl
<b>Conjugation</b>	Unconjugated
<b>Purification</b>	Affinity Purified
<b>Dilution Range</b>	WB: 1:1, 000 DB: 1:10, 000 ELISA: 1:10, 000 IP: 1:125 IHC: 1:100 ICC: 1:100 IF: 1:100 CFM: 1:100
<b>Formulation</b>	
<b>Isotype</b>	IgG
<b>Storage</b>	Store at -20°C for long term storage. Avoid freeze-thaw cycles.
<b>Instruction</b>	

### TARGET INFORMATION

<b>Gene ID</b>	6855
<b>Gene Symbol</b>	SYP
<b>Uniprot ID</b>	SYPH_HUMAN
<b>Immunogen</b>	Synthetic peptide taken within amino acid region 1-100 on human Synaptophysin protein.
<b>Immunogen Region</b>	1-100
<b>Specificity</b>	This antibody does not with cross-react other synaptic vesicle proteins such as synaptotagmin, GAP45, and SNAP25 proteins.
<b>Immunogen Sequence</b>	



Immunohistochemistry of rat brain with Anti-SYP primary antibody (STJ503185) at 1:100 dilution in Buffer. Section was treated with DAB and Haematoxylin stain. Magnification is at 20X.

This product is suitable for in-vitro studies under the RESEARCH USE ONLY [RUO] licence. This product must not be used as for diagnostic or other medical purposes.  
St John's Laboratory Ltd, Knowledge Dock Business Centre, University Way, London, E16 2RD | Tel: 0208 223 3081