

Anti-Caspase 3 antibody (Internal) (STJ70944)

STJ70944

GENERAL INFORMATION

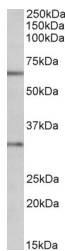
Product Type	Primary antibodies
Short Description	Goat polyclonal antibody anti-Caspase 3 (Internal) is suitable for use in ELISA and Western Blot research applications.
Applications	Pep-ELISA, WB
Host/Source	Goat
Reactivity	Human, Mouse, Rat, Dog

PRODUCT PROPERTIES

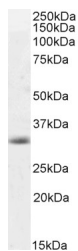
Clonality	Polyclonal
Clone ID	
Concentration	0.5 mg/mL
Conjugation	Unconjugated
Purification	Purified from goat serum by ammonium sulphate precipitation followed by antigen affinity chromatography using the immunizing peptide.
Dilution Range	IF-Strong expression of the protein seen in the cytoplasm of U251 cells. 10µg/ml ELISA-antibody detection limit dilution 1:32000.
Formulation	0.5 mg/ml in Tris saline, 0.02% sodium azide, pH7.3 with 0.5% bovine serum albumin.
Isotype	IgG
Storage Instruction	Store at -20 on receipt and minimise freeze-thaw cycles.

TARGET INFORMATION

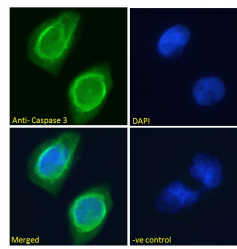
Gene ID	836
Gene Symbol	CASP3
Uniprot ID	CASP3_HUMAN
Immunogen	
Immunogen Region	Internal
Specificity	This antibody is expected to recognise both reported isoforms (NP_004337.2 and NP_116786.1).
Immunogen Sequence	RDVSKEDHSKRS



STJ70944 (1µg/ml) staining of MOLT4 lysate (35µg protein in RIPA buffer). Primary incubation was 1 hour. Detected by chemiluminescence.



STJ70944 (0.5µg/ml) staining of Mouse Liver lysate (35µg protein in RIPA buffer). Detected by chemiluminescence.



STJ70944 Immunofluorescence analysis of paraformaldehyde fixed U251 cells, permeabilized with 0.15% Triton. Primary incubation thr (10ug/ml) followed by Alexa Fluor 488 secondary antibody (2ug/ml) showing cytoplasmic staining. The nuclear stain is DAPI (blue). Negative control: Unimmunized goat IgG (10ug/ml) followed by Alexa Fluor 488 secondary antibody (2ug/ml).

This product is suitable for in-vitro studies under the RESEARCH USE ONLY [RUO] licence. This product must not be used as for diagnostic or other medical purposes.
St John's Laboratory Ltd, Knowledge Dock Business Centre, University Way, London, E16 2RD | Tel: 0208 223 3081