

Anti-RNF13/RZF Antibody (STJ71578)

STJ71578

GENERAL INFORMATION

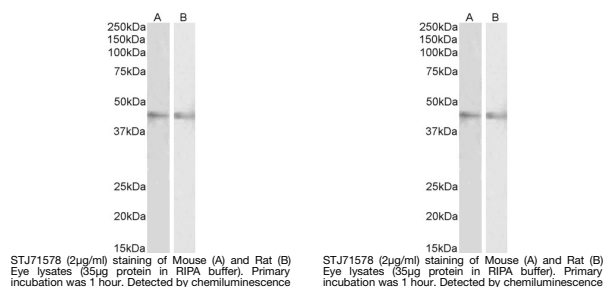
Product Type	Primary antibodies
Short Description	Goat polyclonal anti-RNF13/RZF antibody is suitable for use in ELISA and Western Blot.
Applications	Pep-ELISA, WB
Host/Source	Goat
Reactivity	Human, Mouse, Rat, Dog, Bovine

PRODUCT PROPERTIES

Clonality	Polyclonal
Clone ID	
Concentration	0.5mg/mL
Conjugation	Unconjugated
Purification	Purified from goat serum by ammonium sulphate precipitation followed by antigen affinity chromatography using the immunizing peptide.
Dilution Range	WB-2-4µg/ml ELISA-antibody detection limit dilution 1:2000.
Formulation	Supplied at 0.5 mg/ml in Tris saline, 0.02% sodium azide, pH7.3 with 0.5% bovine serum albumin. Aliquot and store at -20°C. Minimize freezing and thawing.
Isotype	IgG
Storage Instruction	Store at -20 °C and avoid freeze-thaw cycles.

TARGET INFORMATION

Gene ID	11342
Gene Symbol	RNF13
Uniprot ID	RNF13_HUMAN
Immunogen	
Immunogen Region	internal region
Specificity	This antibody is expected to recognize all reported isoforms (NP_009213.1, NP_899239.2; NP_899240.2).
Immunogen Sequence	HKFKKGDEYDVC



This product is suitable for in-vitro studies under the RESEARCH USE ONLY [RUO] licence. This product must not be used as for diagnostic or other medical purposes.
St John's Laboratory Ltd, Knowledge Dock Business Centre, University Way, London, E16 2RD | Tel: 0208 223 3081