

Anti-Cleaved-MMP27-Y99 antibody (50-130 Internal) (STJ90064)

STJ90064

GENERAL INFORMATION

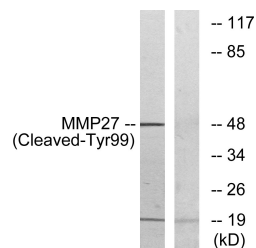
| | |
|--------------------------|--|
| Product Type | Primary antibodies |
| Short Description | Rabbit polyclonal antibody anti-Cleaved-Matrix Metalloproteinase-27-Y99 (50-130 Internal) is suitable for use in Western Blot and ELISA research applications. |
| Applications | WB, ELISA |
| Host/Source | Rabbit |
| Reactivity | Human, Monkey |

PRODUCT PROPERTIES

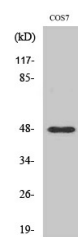
| | |
|-----------------------|--|
| Clonality | Polyclonal |
| Clone ID | |
| Concentration | 1 mg/mL |
| Conjugation | Unconjugated |
| Purification | The antibody was affinity-purified from rabbit anti-serum by affinity-chromatography. |
| Dilution Range | WB 1:500-1:2000 ELISA 1:10000 |
| Formulation | PBS, 50% Glycerol, 0.5% BSA and 0.02% Sodium Azide. |
| Isotype | IgG |
| Storage | Store at -20°C for up to 1 year from the date of receipt, and avoid repeat freeze-thaw cycles. |
| Instruction | |

TARGET INFORMATION

| | |
|---------------------------|---|
| Gene ID | 64066 |
| Gene Symbol | MMP27 |
| Uniprot ID | MMP27_HUMAN |
| Immunogen | The antiserum was produced against synthesized peptide derived from human MMP27 at amino acid range 80-129 |
| Immunogen Region | 50-130 Internal |
| Specificity | Cleaved-MMP27-Y99 polyclonal antibody (Matrix Metalloproteinase-27) binds to endogenous Matrix Metalloproteinase-27 at the amino acid region 50-130 Internal. |
| Immunogen Sequence | |



Western blot analysis of lysates from COS7 cells, treated with etoposide 25µM 1h, using MMP27 (Cleaved-Tyr99) Antibody. The lane on the right is blocked with the synthesized peptide.



Western blot analysis of various cells using Cleaved-MMP-27 (Y99) Polyclonal Antibody