

Anti-Cleaved-MMP3-F100 antibody (50-130 Internal) (STJ90065)

STJ90065

GENERAL INFORMATION

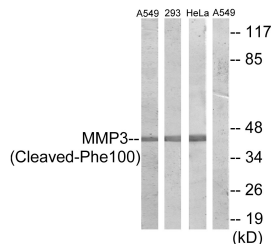
Product Type	Primary antibodies
Short Description	Rabbit polyclonal antibody anti-Cleaved-Stromelysin-1-F100 (50-130 Internal) is suitable for use in Western Blot and ELISA research applications.
Applications	WB, ELISA
Host/Source	Rabbit
Reactivity	Human, Rat, Mouse

PRODUCT PROPERTIES

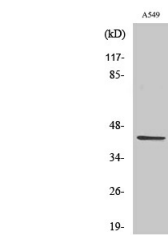
Clonality	Polyclonal
Clone ID	
Concentration	1 mg/mL
Conjugation	Unconjugated
Purification	The antibody was affinity-purified from rabbit anti-serum by affinity-chromatography.
Dilution Range	WB 1:500-1:2000 ELISA 1:20000
Formulation	PBS, 50% Glycerol, 0.5% BSA and 0.02% Sodium Azide.
Isotype	IgG
Storage Instruction	Store at -20°C for up to 1 year from the date of receipt, and avoid repeat freeze-thaw cycles.

TARGET INFORMATION

Gene ID	4314
Gene Symbol	MMP3
Uniprot ID	MMP3_HUMAN
Immunogen	The antiserum was produced against synthesized peptide derived from human MMP3 at amino acid range 81-130
Immunogen Region	50-130 Internal
Specificity	Cleaved-MMP3-F100 polyclonal antibody (Stromelysin-1) binds to endogenous Stromelysin-1 at the amino acid region 50-130 Internal.
Immunogen Sequence	



Western blot analysis of lysates from A549, 293, and HeLa cells, treated with etoposide 25uM 24h, using MMP3 (Cleaved-Phe100) Antibody. The lane on the right is blocked with the synthesized peptide.



Western blot analysis of various cells using Cleaved-MMP-3 (F100) Polyclonal Antibody