

## Anti-Acetyl-Histone H4-Lys12 antibody (10-90) (STJ90128)

STJ90128

### GENERAL INFORMATION

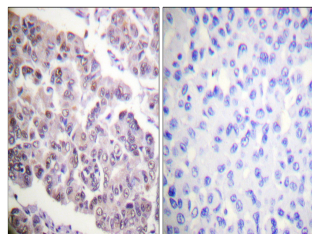
<b>Product Type</b>	Primary antibodies
<b>Short Description</b>	Rabbit polyclonal antibody anti-Acetyl-Histone H4-Lys12 (10-90) is suitable for use in Western Blot, Immunohistochemistry, Immunofluorescence, Immunocytochemistry and ELISA research applications.
<b>Applications</b>	WB, IHC-P, IF, ICC, ELISA
<b>Host/Source</b>	Rabbit
<b>Reactivity</b>	Human, Mouse, Rat, Monkey

### PRODUCT PROPERTIES

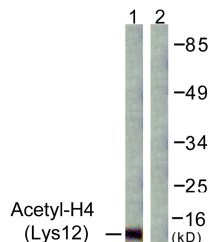
<b>Clonality</b>	Polyclonal
<b>Clone ID</b>	
<b>Concentration</b>	1 mg/mL
<b>Conjugation</b>	Unconjugated
<b>Purification</b>	The antibody was affinity-purified from rabbit anti-serum by affinity-chromatography.
<b>Dilution Range</b>	WB 1:500-1:2000 IHC 1:100-1:300 IF 1:200-1:1000 ELISA 1:10000
<b>Formulation</b>	PBS, 50% Glycerol, 0.5% BSA and 0.02% Sodium Azide.
<b>Isotype</b>	IgG
<b>Storage Instruction</b>	Store at -20°C for up to 1 year from the date of receipt, and avoid repeat freeze-thaw cycles.

### TARGET INFORMATION

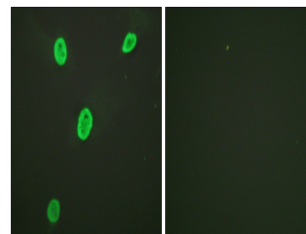
<b>Gene ID</b>	121504/554313/8294/8359/8360/8361/8362/8363/8364/8365/8366/8367/8368/8370
<b>Gene Symbol</b>	H4C1.H4C2.H4C3.H4C4.H4C5.H4C6.H4C8.H4C9.H4C11.H4C12.H4C13.H4C14.H4C15.H4-16
<b>Uniprot ID</b>	H4_HUMAN
<b>Immunogen</b>	The antiserum was produced against synthesized peptide derived from human Histone H4 around the acetylated site of Lys12 at amino acid range 10-59
<b>Immunogen Region</b>	10-90
<b>Specificity</b>	Acetyl-Histone H4-Lys12 polyclonal antibody (Histone H4) binds to endogenous Histone H4 at the amino acid region 10-90.
<b>Immunogen Sequence</b>	



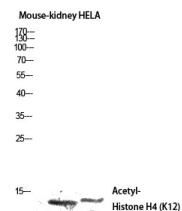
Immunohistochemistry analysis of paraffin-embedded human breast carcinoma tissue, using Histone H4 (Acetyl-Lys12) Antibody. The picture on the right is blocked with the synthesized peptide.



Western blot analysis of lysates from COS7 cells, treated with TSA 400nM 24h, using Histone H4 (Acetyl-Lys12) Antibody. The lane on the right is blocked with the synthesized peptide.



Immunofluorescence analysis of HeLa cells, using Histone H4 (Acetyl-Lys12) Antibody. The picture on the right is blocked with the synthesized peptide.



Western blot analysis of Mouse-kidney HELA lysis using Acetyl-Histone H4 (K12) antibody. Antibody was diluted at 1:500. Secondary antibody was diluted at 1:20000

This product is suitable for in-vitro studies under the RESEARCH USE ONLY [RUO] licence. This product must not be used as for diagnostic or other medical purposes.  
St John's Laboratory Ltd, Knowledge Dock Business Centre, University Way, London, E16 2RD | Tel: 0208 223 3081