

Anti-Phospho-MAP2K1-Thr292 antibody (230-310) (STJ90326)

STJ90326

GENERAL INFORMATION

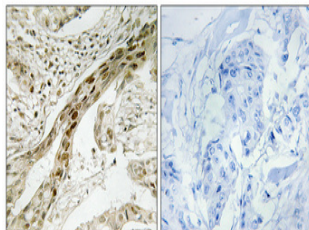
Product Type	Primary antibodies
Short Description	Rabbit polyclonal antibody anti-Phospho-Dual Specificity Mitogen-Activated Protein Kinase Kinase 1-Thr292 (230-310) is suitable for use in Western Blot, Immunohistochemistry, Immunofluorescence, Immunocytochemistry and ELISA research applications.
Applications	WB, IHC-P, IF, ICC, ELISA
Host/Source	Rabbit
Reactivity	Human, Mouse, Rat

PRODUCT PROPERTIES

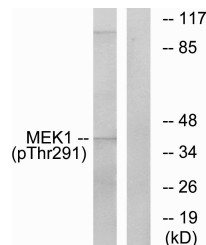
Clonality	Polyclonal
Clone ID	
Concentration	1 mg/mL
Conjugation	Unconjugated
Purification	The antibody was affinity-purified from rabbit anti-serum by affinity-chromatography.
Dilution	WB 1:500-1:2000
Range	IHC 1:100-1:300 IF 1:200-1:1000 ELISA 1:10000
Formulation	PBS, 50% Glycerol, 0.5% BSA and 0.02% Sodium Azide.
Isotype	IgG
Storage	Store at -20°C for up to 1 year from the date of receipt, and avoid repeat freeze-thaw cycles.
Instruction	

TARGET INFORMATION

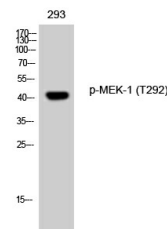
Gene ID	5604
Gene Symbol	MAP2K1
Uniprot ID	MP2K1_HUMAN
Immunogen	The antiserum was produced against synthesized peptide derived from human MEK1 around the phosphorylation site of Thr291 at amino acid range 261-310
Immunogen Region	230-310
Specificity	Phospho-MAP2K1-Thr292 polyclonal antibody (Dual Specificity Mitogen-Activated Protein Kinase Kinase 1) binds to endogenous Dual Specificity Mitogen-Activated Protein Kinase Kinase 1 at the amino acid region 230-310 only when phosphorylated at Thr292.
Immunogen Sequence	



Immunohistochemical analysis of paraffin-embedded Human breast cancer. Antibody was diluted at 1:100 (4°C overnight). High-pressure and temperature Tris-EDTA, pH8.0 was used for antigen retrieval. Negative control (right) obtained from antibody was pre-absorbed by immunogen peptide.



Western blot analysis of lysates from K562 cells, using MEK1 (Phospho-Thr291) Antibody. The lane on the right is blocked with the phospho peptide.



Western blot analysis of 293 cells using Phospho-MEK-1 (T292) Polyclonal Antibody diluted at 1: 1000

This product is suitable for in-vitro studies under the RESEARCH USE ONLY [RUO] licence. This product must not be used as for diagnostic or other medical purposes.

St John's Laboratory Ltd, Knowledge Dock Business Centre, University Way, London, E16 2RD | Tel: 0208 223 3081