

Anti-ADORA1 antibody (250-330 C-Term) (STJ91493)

STJ91493

GENERAL INFORMATION

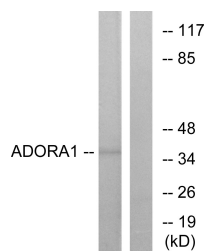
Product Type	Primary antibodies
Short Description	Rabbit polyclonal antibody anti-Adenosine Receptor A1 (250-330 C-Term) is suitable for use in Western Blot, Immunofluorescence, Immunocytochemistry and ELISA research applications.
Applications	WB, IF, ICC, ELISA
Host/Source	Rabbit
Reactivity	Human, Rat

PRODUCT PROPERTIES

Clonality	Polyclonal
Clone ID	
Concentration	1 mg/mL
Conjugation	Unconjugated
Purification	The antibody was affinity-purified from rabbit anti-serum by affinity-chromatography.
Dilution Range	WB 1:500-1:2000 IF 1:200-1:1000 ELISA 1:20000
Formulation	PBS, 50% Glycerol, 0.5% BSA and 0.02% Sodium Azide.
Isotype	IgG
Storage Instruction	Store at -20°C for up to 1 year from the date of receipt, and avoid repeat freeze-thaw cycles.

TARGET INFORMATION

Gene ID	134
Gene Symbol	ADORA1
Uniprot ID	AA1R_HUMAN
Immunogen	The antiserum was produced against synthesized peptide derived from human ADORA1 at amino acid range 277-326
Immunogen Region	250-330 C-Term
Specificity	ADORA1 polyclonal antibody (Adenosine Receptor A1) binds to endogenous Adenosine Receptor A1 at the amino acid region 250-330 C-Term.
Immunogen Sequence	



Western blot analysis of lysates from MCF-7 cells, using ADORA1 Antibody. The lane on the right is blocked with the synthesized peptide.