

Anti-CSNK1G2 antibody (10-90 N-Term) (STJ92014)

STJ92014

GENERAL INFORMATION

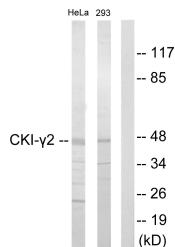
Product Type	Primary antibodies
Short Description	Rabbit polyclonal antibody anti-Casein Kinase I Isoform Gamma-2 (10-90 N-Term) is suitable for use in Western Blot, Immunohistochemistry, Immunofluorescence, Immunocytochemistry and ELISA research applications.
Applications	WB, IHC-P, IF, ICC, ELISA
Host/Source	Rabbit
Reactivity	Human, Mouse, Rat

PRODUCT PROPERTIES

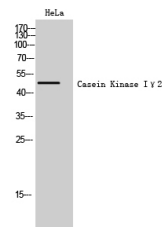
Clonality	Polyclonal
Clone ID	
Concentration	1 mg/mL
Conjugation	Unconjugated
Purification	The antibody was affinity-purified from rabbit anti-serum by affinity-chromatography.
Dilution	WB 1:500-1:2000
Range	IHC 1:100-1:300 IF 1:200-1:1000 ELISA 1:10000
Formulation	PBS, 50% Glycerol, 0.5% BSA and 0.02% Sodium Azide.
Isotype	IgG
Storage Instruction	Store at -20°C for up to 1 year from the date of receipt, and avoid repeat freeze-thaw cycles.

TARGET INFORMATION

Gene ID	1455
Gene Symbol	CSNK1G2
Uniprot ID	KC1G2_HUMAN
Immunogen	The antiserum was produced against synthesized peptide derived from human CKI-gamma2 at amino acid range 10-59
Immunogen Region	10-90 N-Term
Specificity	CSNK1G2 polyclonal antibody (Casein Kinase I Isoform Gamma-2) binds to endogenous Casein Kinase I Isoform Gamma-2 at the amino acid region 10-90 N-Term.
Immunogen Sequence	



Western blot analysis of lysates from HeLa and 293 cells, using CKI-gamma2 Antibody. The lane on the right is blocked with the synthesized peptide.



Western blot analysis of HeLa cells using Casein Kinase I Gamma 2 Polyclonal Antibody

This product is suitable for in-vitro studies under the RESEARCH USE ONLY [RUO] licence. This product must not be used as for diagnostic or other medical purposes.
St John's Laboratory Ltd, Knowledge Dock Business Centre, University Way, London, E16 2RD | Tel: 0208 223 3081