

Anti-AATF antibody (10-90 N-Term) (STJ92259)

STJ92259

GENERAL INFORMATION

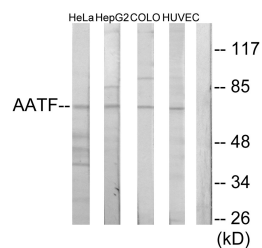
Product Type	Primary antibodies
Short Description	Rabbit polyclonal antibody anti-Protein Aatf (10-90 N-Term) is suitable for use in Western Blot, Immunohistochemistry, Immunofluorescence and ELISA research applications.
Applications	WB, IHC-P, IF-P, ELISA
Host/Source	Rabbit
Reactivity	Human, Mouse, Rat

PRODUCT PROPERTIES

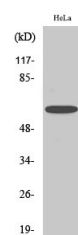
Clonality	Polyclonal
Clone ID	
Concentration	1 mg/mL
Conjugation	Unconjugated
Purification	The antibody was affinity-purified from rabbit anti-serum by affinity-chromatography.
Dilution Range	WB 1:500-1:2000 IHC 1:100-1:300 ELISA 1:10000
Formulation	PBS, 50% Glycerol, 0.5% BSA and 0.02% Sodium Azide.
Isotype	IgG
Storage Instruction	Store at -20°C for up to 1 year from the date of receipt, and avoid repeat freeze-thaw cycles.

TARGET INFORMATION

Gene ID	26574
Gene Symbol	AATF
Uniprot ID	AATF_HUMAN
Immunogen	The antiserum was produced against synthesized peptide derived from human AATF at amino acid range 10-59
Immunogen Region	10-90 N-Term
Specificity	AATF polyclonal antibody (Protein Aatf) binds to endogenous Protein Aatf at the amino acid region 10-90 N-Term.
Immunogen Sequence	



Western blot analysis of lysates from HeLa cells, HepG2 cells, COLO205 cells, and HUVEC cells, using AATF Antibody. The lane on the right is blocked with the synthesized peptide.



Western blot analysis of various cells using Che-1 Polyclonal Antibody.

This product is suitable for in-vitro studies under the RESEARCH USE ONLY [RUO] licence. This product must not be used as for diagnostic or other medical purposes.
St John's Laboratory Ltd, Knowledge Dock Business Centre, University Way, London, E16 2RD | Tel: 0208 223 3081