

## Anti-CLU antibody (370-450 C-Term) (STJ92346)

STJ92346

### GENERAL INFORMATION

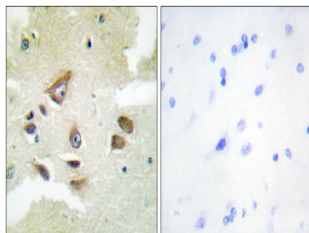
<b>Product Type</b>	Primary antibodies
<b>Short Description</b>	Rabbit polyclonal antibody anti-Clusterin (370-450 C-Term) is suitable for use in Western Blot, Immunohistochemistry, Immunofluorescence, Immunocytochemistry and ELISA research applications.
<b>Applications</b>	WB, IHC-P, IF, ICC, ELISA
<b>Host/Source</b>	Rabbit
<b>Reactivity</b>	Human, Mouse, Rat

### PRODUCT PROPERTIES

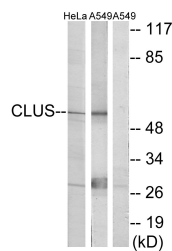
<b>Clonality</b>	Polyclonal
<b>Clone ID</b>	
<b>Concentration</b>	1 mg/mL
<b>Conjugation</b>	Unconjugated
<b>Purification</b>	The antibody was affinity-purified from rabbit anti-serum by affinity-chromatography.
<b>Dilution Range</b>	WB 1:500-1:2000 IHC 1:100-1:300 IF 1:200-1:1000 ELISA 1:20000
<b>Formulation</b>	PBS, 50% Glycerol, 0.5% BSA and 0.02% Sodium Azide.
<b>Isotype</b>	IgG
<b>Storage Instruction</b>	Store at -20°C for up to 1 year from the date of receipt, and avoid repeat freeze-thaw cycles.

### TARGET INFORMATION

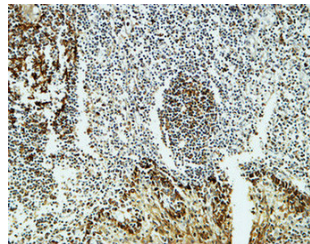
<b>Gene ID</b>	1191
<b>Gene Symbol</b>	CLU
<b>Uniprot ID</b>	CLUS_HUMAN
<b>Immunogen</b>	The antiserum was produced against synthesized peptide derived from human CLU at amino acid range 400-449
<b>Immunogen Region</b>	370-450 C-Term
<b>Specificity</b>	CLU polyclonal antibody (Clusterin) binds to endogenous Clusterin at the amino acid region 370-450 C-Term.
<b>Immunogen Sequence</b>	



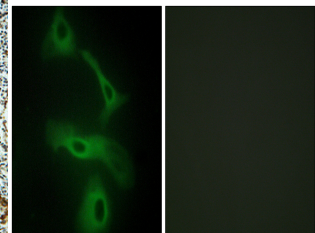
Immunohistochemistry analysis of paraffin-embedded human brain, using CLUS Antibody. The picture on the right is blocked with the synthesized peptide.



Western blot analysis of lysates from HeLa cells and A549 cells, using CLUS Antibody. The lane on the right is blocked with the synthesized peptide.



Immunohistochemical analysis of paraffin-embedded Human Amygdala. 1. Antibody was diluted at 1:400 (4°C overnight). 2. High-pressure and temperature EDTA, pH8.0 was used for antigen retrieval. 3. Secondary antibody was diluted at 1:200 (room temperature, 30min).



Immunofluorescence analysis of HeLa cells, using CLUS Antibody. The picture on the right is blocked with the synthesized peptide.

This product is suitable for in-vitro studies under the RESEARCH USE ONLY [RUO] licence. This product must not be used as for diagnostic or other medical purposes.  
St John's Laboratory Ltd, Knowledge Dock Business Centre, University Way, London, E16 2RD | Tel: 0208 223 3081